

\$649,999 - 425 Buchanan Road, Edmonton

MLS® #E4410111

\$649,999

6 Bedroom, 3.50 Bathroom, 1,937 sqft

Single Family on 0.00 Acres

Bulyea Heights, Edmonton, AB

Visit the Listing Brokerage (and/or listing REALTOR®) website to obtain additional information. Sought after location, FABULOUS two-story home in Bulyea Heights. Located on a quiet street, this 1963.36 sq. ft. two-story home offers 4+2 bedrooms, 2.5+1 bathrooms. The elegant entrance with high ceilings opens to a bright living room. The main floor includes a formal dining room, sunken living room with a fireplace, and a updated kitchen with ample cabinetry, pantry, and stainless steel appliances. A dinette area overlooks the flourish backyard. The lovely south facing back yard provides full year sunshine to your family. On the main floor there are laundry facilities, a bed room and a half bathroom. A staircase leads to 3 bedrooms and a main bathroom on the upper level. The master suite features a walk-in closet, and a 4-piece en suite. The professionally developed basement includes a recreation area, TV/games room, 2 large bedrooms, 3-piece bathroom and a huge storage room. Entire house had been updated.

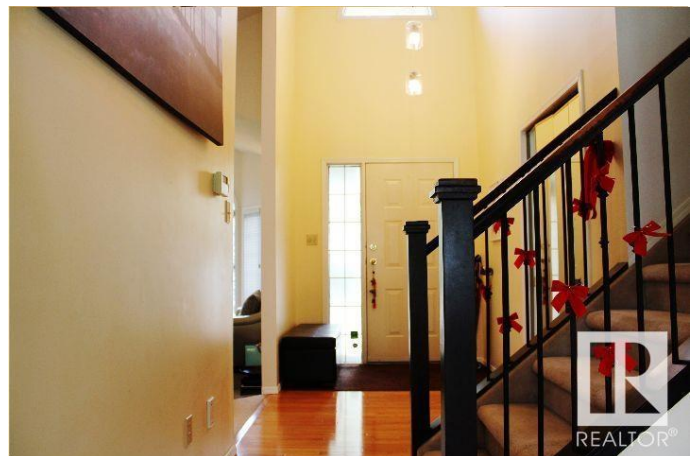
Built in 1990

Essential Information

MLS® # E4410111

Price \$649,999

Bedrooms 6



Bathrooms	3.50
Full Baths	3
Half Baths	1
Square Footage	1,937
Acres	0.00
Year Built	1990
Type	Single Family
Sub-Type	Detached Single Family
Style	2 Storey
Status	Active

Community Information

Address	425 Buchanan Road
Area	Edmonton
Subdivision	Bulyea Heights
City	Edmonton
County	ALBERTA
Province	AB
Postal Code	T6R 2A5

Amenities

Amenities	See Remarks
Parking	Double Garage Attached

Interior

Interior Features	ensuite bathroom
Appliances	See Remarks
Heating	Forced Air-1, Natural Gas
Fireplace	Yes
Fireplaces	Granite Surround
Stories	2
Has Basement	Yes
Basement	Full, Finished

Exterior

Exterior	Wood, See Remarks
Exterior Features	Landscaped, Playground Nearby, Schools, Shopping Nearby, See Remarks
Roof	Asphalt Shingles

Construction	Wood, See Remarks
Foundation	Concrete Perimeter

Additional Information

Date Listed	October 10th, 2024
Days on Market	202
Zoning	Zone 14

DATA IS DEEMED RELIABLE BUT IS NOT GUARANTEED ACCURATE BY THE REALTORS® ASSOCIATION OF EDMONTON. COPYRIGHT 2025 BY THE REALTORS® ASSOCIATION OF EDMONTON. ALL RIGHTS RESERVED.Trademarks are owned or controlled by the Canadian Real Estate Association (CREA) and identify real estate professionals who are members of CREA (REALTOR®, REALTORS®) and/or the quality of services they provide (MLS®, Multiple Listing Service®)

Listing information last updated on April 30th, 2025 at 9:17pm MDT