

\$1,575,000 - 4 52001 Rge Rd 275, Rural Parkland County

MLS® #E4412545

\$1,575,000

6 Bedroom, 5.00 Bathroom, 3,793 sqft

Rural on 1.06 Acres

Lily Lake Estates (Parkland), Rural Parkland County, AB

WOW! 'LIVE YOUR DREAM' *

CUSTOM-BUILT 6 BED/3.5 BATH

EXECUTIVE WALK OUT ON 1.06 ACRES *

OVER 4500 SQFT LIVING SPACE * BACKS

ONTO LILY LAKE * TRIPLE ATTACHED +

TRIPLE DOOR 62'x32' DETACHED

GARAGE/SHOP w/ 2 BDRM 4PC BATH * ALL

NEW STAMPED CONCRETE

DECKS/AGGRAGATE PATIO *

GLASS/METAL RAILINGS * GAZEBO

*18â€™™ Ceilings in GRAND ENTRY & GREAT

RM * CURVED OPEN STAIRCASES *

MARBLE & HARDWOOD FLOORS *CHEF'S

KITCHEN ((* FOIL-WRAPPED & CHERRY

CABINETRY * GRANITE COUNTERS

*GLASS TILE BACKSPLASH * S/S

APPLIANCES * DOUBLE WIDE

FRIDGE/UPRIGHT FREEZER * 5-BURNER

GAS COOK TOP * WALL OVENS X 2 *

WARMING DRAWER * MICROWAVE *

DISHWASHER * TRASH COMPACTOR *

WINE COOLER * PANTRY FRIDGE)) *

STONE F/P * FORMAL DINING/FLEX ROOM

+ INFORMAL FAMILY DINING RM * HOME

OFFICE * FAMILY RM *BONUS RM * GAMES

RM * CATWALK ACCESS TO PRIMARY

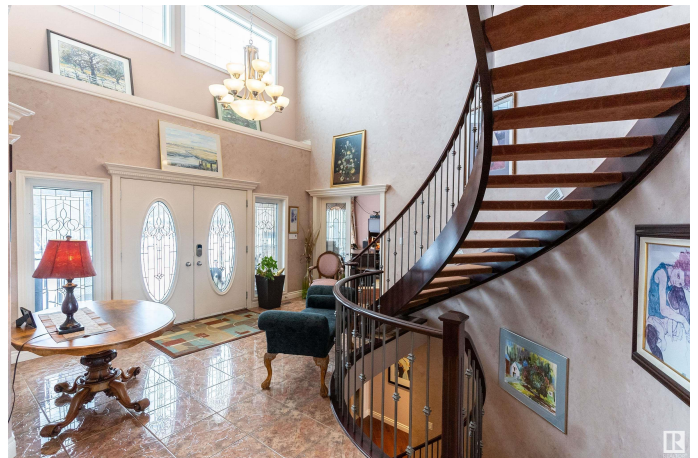
SUITE * SPA ENSUITE w/STEAM SHOWER *

PRIVATE BALCONY * LAUNDRY CHUTES *

SKYLIGHTS * 9 min to Spruce Grove / Stony

Plain. 20min to Anthony Henday. Now what on

earth could be holding you back???



Built in 2001

Essential Information

MLS® #	E4412545
Price	\$1,575,000
Bedrooms	6
Bathrooms	5.00
Full Baths	3
Half Baths	4
Square Footage	3,793
Acres	1.06
Year Built	2001
Type	Rural
Sub-Type	Detached Single Family
Style	2 Storey
Status	Active

Community Information

Address	4 52001 Rge Rd 275
Area	Rural Parkland County
Subdivision	Lily Lake Estates (Parkland)
City	Rural Parkland County
County	ALBERTA
Province	AB
Postal Code	T7X 3V2

Amenities

Features	Deck, Detectors Smoke, Fire Pit, Gazebo, Guest Suite, Parking-Extra, R.V. Storage, Workshop
----------	---------------------------------------------------------------------------------------------

Interior

Interior Features	ensuite bathroom
Heating	Forced Air-1, In Floor Heat System, Natural Gas
Fireplace	Yes
Stories	3
Has Basement	Yes
Basement	Full, Finished

Exterior

Exterior	Wood
Exterior Features	Fruit Trees/Shrubs, Golf Nearby, Lake Access Property, Lake View, Landscaped
Construction	Wood
Foundation	Concrete Perimeter

Additional Information

Date Listed	October 31st, 2024
Days on Market	321
Zoning	Zone 90

DATA IS DEEMED RELIABLE BUT IS NOT GUARANTEED ACCURATE BY THE REALTORS® ASSOCIATION OF EDMONTON. COPYRIGHT 2025 BY THE REALTORS® ASSOCIATION OF EDMONTON. ALL RIGHTS RESERVED.Trademarks are owned or controlled by the Canadian Real Estate Association (CREA) and identify real estate professionals who are members of CREA (REALTOR®, REALTORS®) and/or the quality of services they provide (MLS®, Multiple Listing Service®)

Listing information last updated on September 17th, 2025 at 5:32pm MDT