

## \$164,900 - 157 Roseland Village, Edmonton

MLS® #E4428889

**\$164,900**

2 Bedroom, 1.50 Bathroom, 1,059 sqft

Condo / Townhouse on 0.00 Acres

Northmount (Edmonton), Edmonton, AB

End unit 2 bedroom 2 storey townhouse with unfinished basement, 4 appliances and priced to sell...Newer higher efficiency furnace, carpets are good, end unit with large fenced yard. Low condo fees and parking stall 28. PERFECT!!

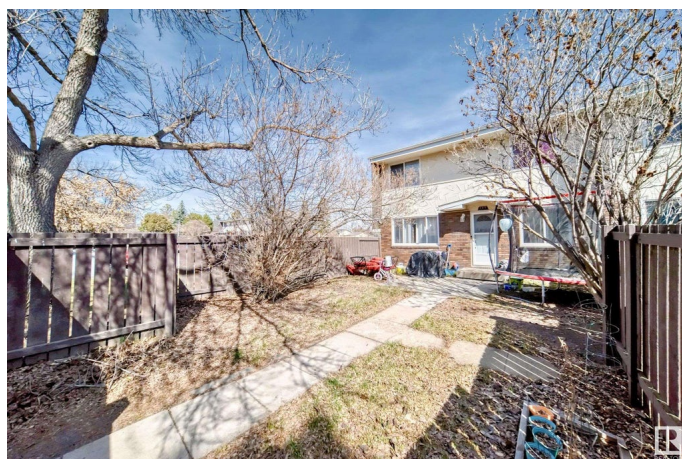
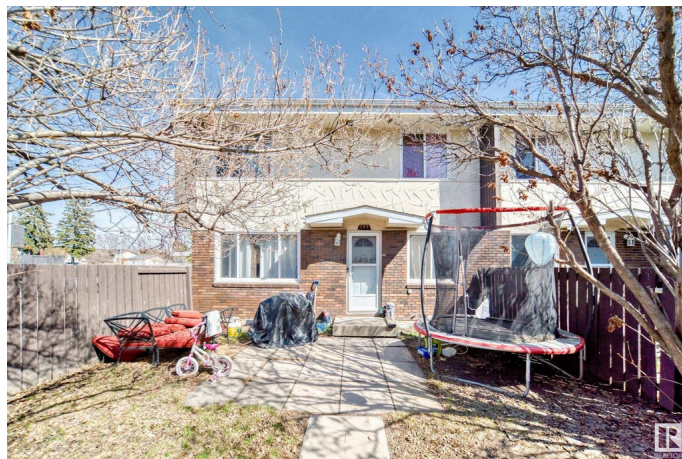
Built in 1969

### Essential Information

|                |                   |
|----------------|-------------------|
| MLS® #         | E4428889          |
| Price          | \$164,900         |
| Bedrooms       | 2                 |
| Bathrooms      | 1.50              |
| Full Baths     | 1                 |
| Half Baths     | 1                 |
| Square Footage | 1,059             |
| Acres          | 0.00              |
| Year Built     | 1969              |
| Type           | Condo / Townhouse |
| Sub-Type       | Townhouse         |
| Style          | 2 Storey          |
| Status         | Active            |

### Community Information

|             |                       |
|-------------|-----------------------|
| Address     | 157 Roseland Village  |
| Area        | Edmonton              |
| Subdivision | Northmount (Edmonton) |



|             |          |
|-------------|----------|
| City        | Edmonton |
| County      | ALBERTA  |
| Province    | AB       |
| Postal Code | T5E 5R6  |

### **Amenities**

|                |  |
|----------------|--|
| Amenities      | Hot Water Natural Gas, Parking-Plug-Ins, Vinyl Windows |
| Parking Spaces | 1  |
| Parking        | Stall  |

### **Interior**

|              |   |
|--------------|---|
| Appliances   | Dryer, Refrigerator, Stove-Electric, Washer |
| Heating      | Forced Air-1, Natural Gas                   |
| Stories      | 2   |
| Has Basement | Yes   |
| Basement     | Full, Unfinished                            |

### **Exterior**

|                   |   |
|-------------------|---|
| Exterior          | Wood, Brick, Stucco                                     |
| Exterior Features | Fenced, Public Transportation, Schools, Shopping Nearby |
| Roof              | Tar & Gravel  |
| Construction      | Wood, Brick, Stucco                                     |
| Foundation        | Concrete Perimeter                                      |

### **Additional Information**

|                |                 |
|----------------|-----------------|
| Date Listed    | April 1st, 2025 |
| Days on Market | 76              |
| Zoning         | Zone 02         |
| Condo Fee      | \$268           |

DATA IS DEEMED RELIABLE BUT IS NOT GUARANTEED ACCURATE BY THE REALTORS® ASSOCIATION OF EDMONTON. COPYRIGHT 2025 BY THE REALTORS® ASSOCIATION OF EDMONTON. ALL RIGHTS RESERVED. Trademarks are owned or controlled by the Canadian Real Estate Association (CREA) and identify real estate professionals who are members of CREA (REALTOR®, REALTORS®) and/or the quality of services they provide (MLS®, Multiple Listing Service®)

Listing information last updated on June 16th, 2025 at 4:47am MDT