

\$940,000 - 55020 Rr 260, Rural Sturgeon County

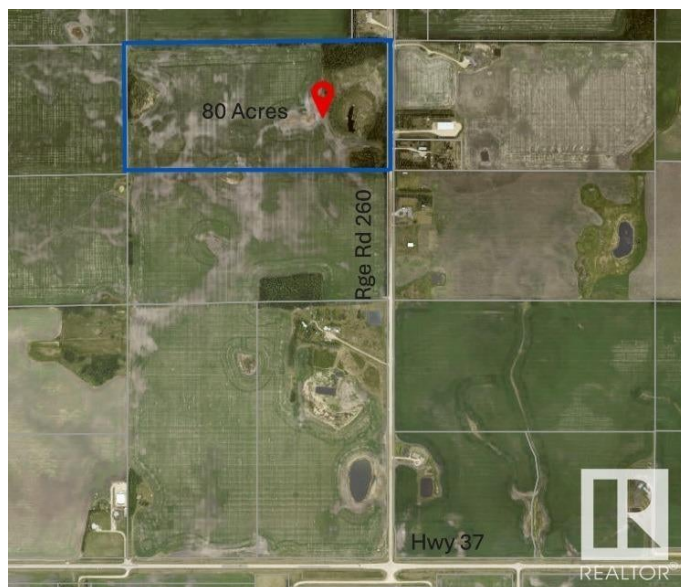
MLS® #E4430959

\$940,000

0 Bedroom, 0.00 Bathroom,
Rural on 80.00 Acres

None, Rural Sturgeon County, AB

Here's your chance to own a full 80 acres of pristine land—perfect for creating your own rural retreat or expanding your existing holdings. With subdivision potential still available, this property offers the flexibility to build a cozy acreage, a rancher-style forever home, or a private estate surrounded by open skies and natural beauty. Located less than 10 minutes from both St. Albert and Morinville, and under 20 minutes to Edmonton, it's the ideal blend of peace and convenience. Plus, with only 1.5 km of gravel road off Hwy 37, access is easy and travel is a breeze. This is where tranquility meets opportunity.



Essential Information

| | |
|-----------|-----------------|
| MLS® # | E4430959 |
| Price | \$940,000 |
| Bathrooms | 0.00 |
| Acres | 80.00 |
| Type | Rural |
| Sub-Type | Vacant Lot/Land |
| Status | Active |

Community Information

| | |
|-------------|-----------------------|
| Address | 55020 Rr 260 |
| Area | Rural Sturgeon County |
| Subdivision | None |

| | |
|-------------|-----------------------|
| City | Rural Sturgeon County |
| County | ALBERTA |
| Province | AB |
| Postal Code | T8T 0W5 |

Exterior

Exterior Features See Remarks

Additional Information

| | |
|----------------|------------------|
| Date Listed | April 15th, 2025 |
| Days on Market | 109 |
| Zoning | Zone 60 |

DATA IS DEEMED RELIABLE BUT IS NOT GUARANTEED ACCURATE BY THE REALTORS® ASSOCIATION OF EDMONTON. COPYRIGHT 2025 BY THE REALTORS® ASSOCIATION OF EDMONTON. ALL RIGHTS RESERVED.Trademarks are owned or controlled by the Canadian Real Estate Association (CREA) and identify real estate professionals who are members of CREA (REALTOR®, REALTORS®) and/or the quality of services they provide (MLS®, Multiple Listing Service®)

Listing information last updated on August 2nd, 2025 at 6:47pm MDT