

\$449,900 - 536 Wiseman Lane, Edmonton

MLS® #E4433342

\$449,900

4 Bedroom, 2.00 Bathroom, 984 sqft

Single Family on 0.00 Acres

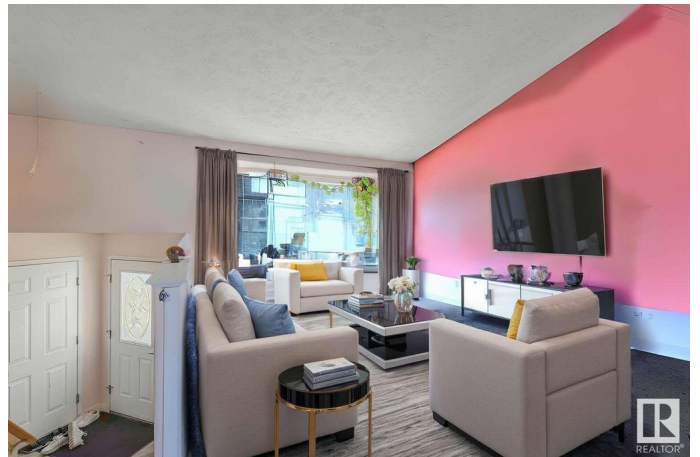
Wild Rose, Edmonton, AB

Welcome to this beautifully updated bi-level home in the desirable community of Wild Rose – perfect for growing families or savvy investors! Offering 983 sq ft of bright, open-concept living space, this home features 4 bedrooms (2 up, 2 down) and 2 full bathrooms. The main floor offers a warm and welcoming layout with a spacious living room with cozy fireplace, dining area, kitchen, 2 bedrooms, and a full bath. The FULLY FINISHED BASEMENT includes 2 additional bedrooms, another full bathroom, a second kitchen, a recreation room, and a laundry room – making it ideal for extended family or separate living quarters. Step into the large foyer and feel right at home in this versatile and well-maintained property!

Built in 2001

Essential Information

MLS® #	E4433342
Price	\$449,900
Bedrooms	4
Bathrooms	2.00
Full Baths	2
Square Footage	984
Acres	0.00
Year Built	2001



Type	Single Family
Sub-Type	Detached Single Family
Style	Bi-Level
Status	Active

Community Information

Address	536 Wiseman Lane
Area	Edmonton
Subdivision	Wild Rose
City	Edmonton
County	ALBERTA
Province	AB
Postal Code	T6T 1N6

Amenities

Amenities	Deck, No Animal Home, No Smoking Home
Parking	Double Garage Attached

Interior

Appliances	Dishwasher-Built-In, Dryer, Garage Opener, Washer, Window Coverings, Refrigerators-Two, Stoves-Two
Heating	Forced Air-1, Natural Gas
Fireplace	Yes
Fireplaces	Mantel
Stories	3
Has Suite	Yes
Has Basement	Yes
Basement	Full, Finished

Exterior

Exterior	Wood, Metal, Vinyl
Exterior Features	Fenced, Landscaped, Playground Nearby, Public Transportation, Schools, Shopping Nearby
Roof	Asphalt Shingles
Construction	Wood, Metal, Vinyl
Foundation	Concrete Perimeter

Additional Information

Date Listed	April 29th, 2025
-------------	------------------

Days on Market 1

Zoning Zone 30

DATA IS DEEMED RELIABLE BUT IS NOT GUARANTEED ACCURATE BY THE REALTORS® ASSOCIATION OF EDMONTON. COPYRIGHT 2025 BY THE REALTORS® ASSOCIATION OF EDMONTON. ALL RIGHTS RESERVED. Trademarks are owned or controlled by the Canadian Real Estate Association (CREA) and identify real estate professionals who are members of CREA (REALTOR®, REALTORS®) and/or the quality of services they provide (MLS®, Multiple Listing Service®)

Listing information last updated on April 30th, 2025 at 7:32am MDT