

\$888,000 - 4431 Township Road 504, Rural Parkland County

MLS® #E4434533

\$888,000

0 Bedroom, 0.00 Bathroom,
Rural on 320.00 Acres

None, Rural Parkland County, AB

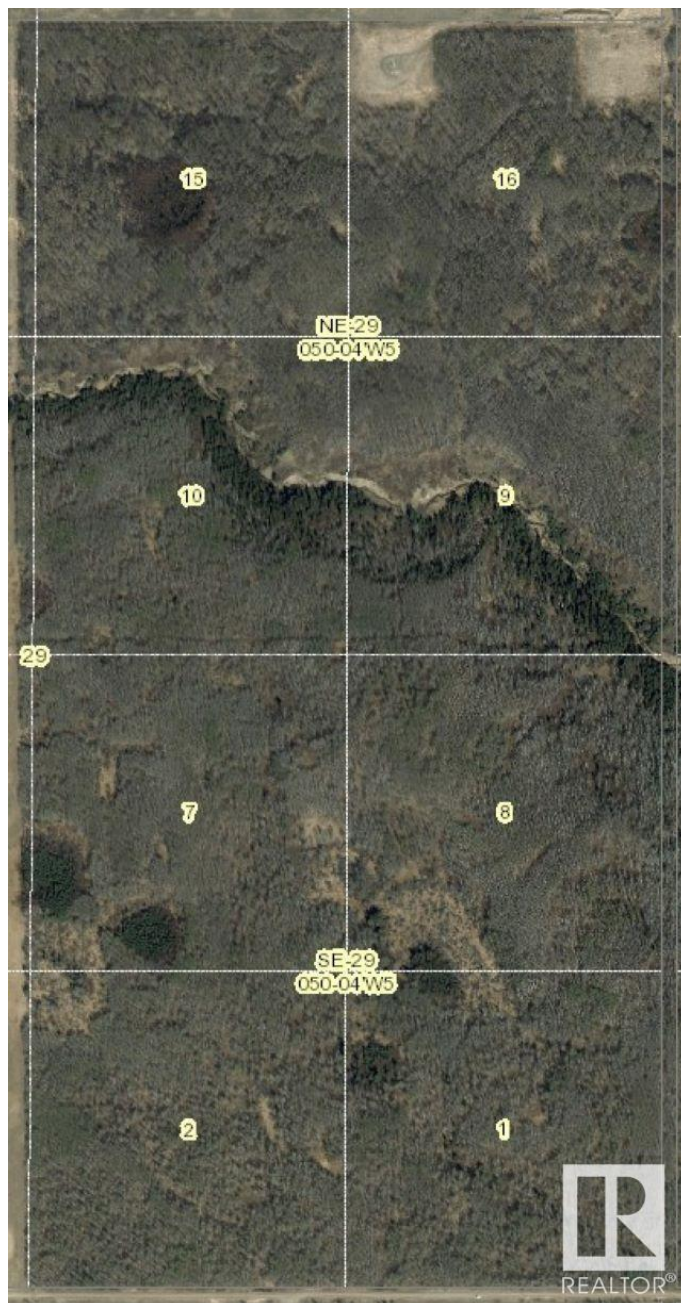
Amazing half section at the south edge of Parkland County, less than an hour west of Edmonton. Heavily treed with lots of elevation changes throughout and a deep ravine running through it. Just north of the North Saskatchewan River near Burtonsville Island Natural Area. One oil well surface lease at the north end generating annual revenue.

Essential Information

| | |
|-----------|-----------------|
| MLS® # | E4434533 |
| Price | \$888,000 |
| Bathrooms | 0.00 |
| Acres | 320.00 |
| Type | Rural |
| Sub-Type | Vacant Lot/Land |
| Status | Active |

Community Information

| | |
|-------------|------------------------|
| Address | 4431 Township Road 504 |
| Area | Rural Parkland County |
| Subdivision | None |
| City | Rural Parkland County |
| County | ALBERTA |
| Province | AB |
| Postal Code | T0E 2H0 |

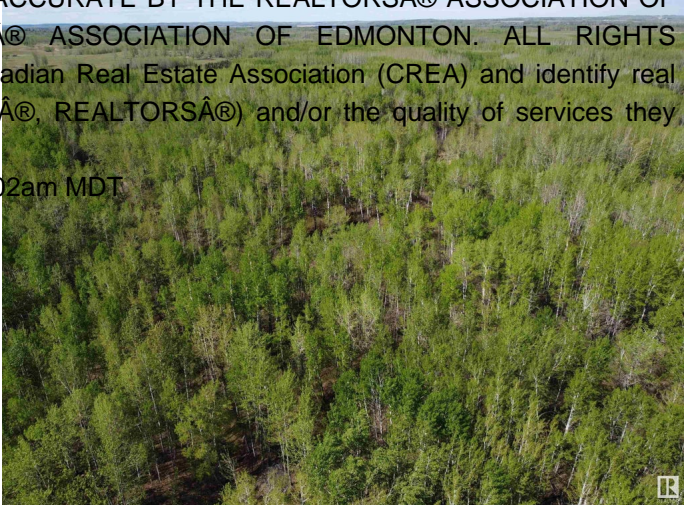


Exterior

Exterior Features Creek, No Through Road, Private

Additional Information

Date Listed May 5th, 2025
Days on Market 135
Zoning Zone 90



DATA IS DEEMED RELIABLE BUT IS NOT GUARANTEED ACCURATE BY THE REALTORS® ASSOCIATION OF EDMONTON. COPYRIGHT 2025 BY THE REALTORS® ASSOCIATION OF EDMONTON. ALL RIGHTS RESERVED.Trademarks are owned or controlled by the Canadian Real Estate Association (CREA) and identify real estate professionals who are members of CREA (REALTOR®, REALTORS®) and/or the quality of services they provide (MLS®, Multiple Listing Service®)
Listing information last updated on September 17th, 2025 at 6:02am MDT