

\$899,000 - 53305 Rge Road 273, Rural Parkland County

MLS® #E4435891

\$899,000

4 Bedroom, 2.50 Bathroom, 3,197 sqft

Rural on 1.29 Acres

Atim Creek Springs, Rural Parkland County,
AB

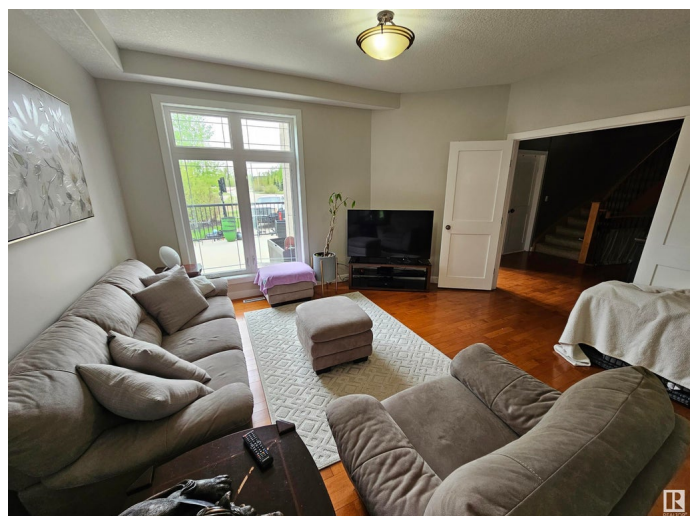
Located in Atim Creek, that is one of Parkland Counties most luxurious, high end subdivisions, only 5 minutes north of Spruce Grove. Situated on 1.29 acres., this executive, 2-storey home offers 4 bedrooms, 3 bathrooms and an elegant spiral staircase leading to the upper floor. This main floor includes a family room that is open to a huge kitchen, massive dining room, very large living room & den or 5th bedroom. The kitchen features, two tone cabinetry with island, granite counter tops, a dining nook & walk-in pantry. Other features are the impressive front foyer, the main floor laundry, al large mud room at garage entrance & hardwood throughout. Second level features 4 large bedrooms with the grand, double door entrance into the huge primary bedroom that highlights a cozy gas fireplace, patio doors to a private upper balcony and a 5 pc ensuite bathroom. The basement is unfinished with 2 high efficiency four star furnaces & a separate entry from the garage. Water supply cistern with municipal sewage.

Built in 2007

Essential Information

MLS® # E4435891

Price \$899,000



Bedrooms	4
Bathrooms	2.50
Full Baths	2
Half Baths	1
Square Footage	3,197
Acres	1.29
Year Built	2007
Type	Rural
Sub-Type	Detached Single Family
Style	2 Storey
Status	Active

Community Information

Address	53305 Rge Road 273
Area	Rural Parkland County
Subdivision	Atim Creek Springs
City	Rural Parkland County
County	ALBERTA
Province	AB
Postal Code	T7X 4B4

Amenities

Features	Ceiling 9 ft., Deck, 9 ft. Basement Ceiling
----------	---

Interior

Interior Features	ensuite bathroom
Heating	Forced Air-2, Natural Gas
Stories	2
Has Basement	Yes
Basement	Full, Unfinished

Exterior

Exterior	Wood
Exterior Features	Cul-De-Sac, Landscaped, Private Setting
Construction	Wood
Foundation	Concrete Perimeter

Additional Information

Date Listed	May 9th, 2025
-------------	---------------

Days on Market 38

Zoning Zone 70

DATA IS DEEMED RELIABLE BUT IS NOT GUARANTEED ACCURATE BY THE REALTORS® ASSOCIATION OF EDMONTON. COPYRIGHT 2025 BY THE REALTORS® ASSOCIATION OF EDMONTON. ALL RIGHTS RESERVED. Trademarks are owned or controlled by the Canadian Real Estate Association (CREA) and identify real estate professionals who are members of CREA (REALTOR®, REALTORS®) and/or the quality of services they provide (MLS®, Multiple Listing Service®)

Listing information last updated on June 16th, 2025 at 4:47am MDT