

\$1,999,900 - 32 Windermere Drive, Edmonton

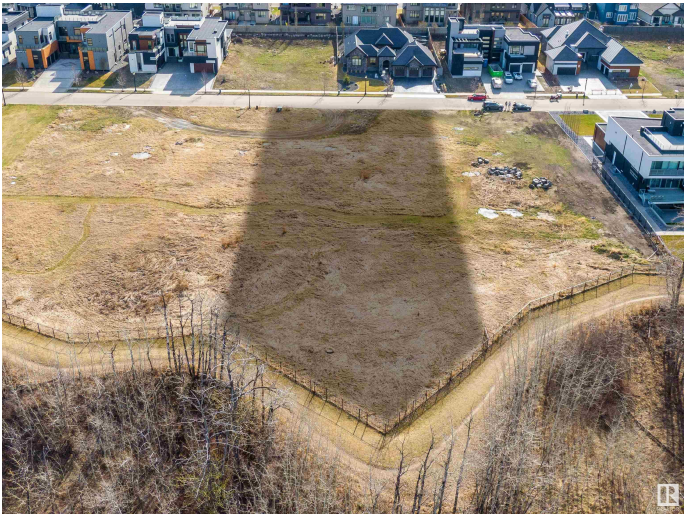
MLS® #E4437450

\$1,999,900

0 Bedroom, 0.00 Bathroom,
Single Family on 0.00 Acres

Windermere, Edmonton, AB

Welcome to the highly coveted area of Windermere Ridge! This spectacular lot boasts breathtaking views of the North Saskatchewan River, and River Ridge Golf & Country Club. This impressive parcel of land is 0.7acres and provides you the opportunity to build with the builder of your choice. In addition to the spectacular unobstructed views, 32 Windermere Drive is near schools, commercial amenities, 3 golf courses and plenty of walking trails to keep you busy all year long. This is the perfect opportunity to build your custom dream home on one of the few remaining river lots on Windermere Drive!



Essential Information

MLS® #	E4437450
Price	\$1,999,900
Bathrooms	0.00
Acres	0.00
Type	Single Family
Sub-Type	Vacant Lot/Land
Status	Active

Community Information

Address	32 Windermere Drive
Area	Edmonton
Subdivision	Windermere

City	Edmonton
County	ALBERTA
Province	AB
Postal Code	T6W 0S2

Exterior

Exterior Features	Environmental Reserve, Flat Site, Golf Nearby, No Back Lane, Not Fenced, Playground Nearby, Ravine View, River Valley View, Schools, Shopping Nearby
-------------------	--

Additional Information

Date Listed	May 20th, 2025
Days on Market	75
Zoning	Zone 56

DATA IS DEEMED RELIABLE BUT IS NOT GUARANTEED ACCURATE BY THE REALTORS® ASSOCIATION OF EDMONTON. COPYRIGHT 2025 BY THE REALTORS® ASSOCIATION OF EDMONTON. ALL RIGHTS RESERVED. Trademarks are owned or controlled by the Canadian Real Estate Association (CREA) and identify real estate professionals who are members of CREA (REALTOR®, REALTORS®) and/or the quality of services they provide (MLS®, Multiple Listing Service®)

Listing information last updated on August 3rd, 2025 at 3:47pm MDT