

\$548,900 - 722 Charlesworth Way, Edmonton

MLS® #E4438487

\$548,900

3 Bedroom, 2.50 Bathroom, 1,776 sqft

Single Family on 0.00 Acres

Charlesworth, Edmonton, AB

One of the biggest Dolce vita's show home duplex, beautifully painted with pastel colors & wrapped in wall papers, centrally air-conditioned, built on 8500+ sqft pie-shaped lot. Heated tandem garage (painted, 14 feet ceiling with chandeliers, side door) to walk through big pantry to spacious kitchen with 2 toned & tinted glass cabinetry & quartz countertop. Main floor & basement having 9 feet ceiling, electric fireplace, ample storage, large size windows in living area with great view of the creek & natural day light. 3 bed rooms, 2.5 bathrooms (5 piece ensuite bathroom & double vanity), bonus room & laundry on upper floor. Decorated with 10k worth of customized window coverings & curtains, high end finishing, wall papers and quartz countertops with lots of storage space. Creek facing, landscaped, fenced backyard surrounded by fruit trees with finished deck, fire pit, 15 feet wide side entrance with custom door. Alum/stone outdoor finish having concrete entrance make this dwelling one of kind properties.

Built in 2015

Essential Information

MLS® # E4438487

Price \$548,900



Bedrooms	3
Bathrooms	2.50
Full Baths	2
Half Baths	1
Square Footage	1,776
Acres	0.00
Year Built	2015
Type	Single Family
Sub-Type	Half Duplex
Style	2 Storey
Status	Active

Community Information

Address	722 Charlesworth Way
Area	Edmonton
Subdivision	Charlesworth
City	Edmonton
County	ALBERTA
Province	AB
Postal Code	T6X 2E9

Amenities

Amenities	Air Conditioner, Ceiling 9 ft., Closet Organizers, Deck, Detectors Smoke, Exterior Walls- 2"x6", Fire Pit, Hot Water Natural Gas, Low Flow Faucets/Shower, No Animal Home, No Smoking Home, See Remarks, Natural Gas BBQ Hookup
Parking Spaces	6
Parking	Heated, Insulated, Single Garage Attached, Tandem, See Remarks

Interior

Interior Features	ensuite bathroom
Appliances	Air Conditioning-Central, Dishwasher-Built-In, Dryer, Microwave Hood Fan, Refrigerator, Stove-Electric, Washer, Water Softener, TV Wall Mount, Curtains and Blinds, Garage Heater
Heating	Forced Air-1, Natural Gas
Fireplace	Yes
Fireplaces	Glass Door, Remote Control, Wall Mount
Stories	2
Has Basement	Yes

Basement Full, Unfinished

Exterior

Exterior Wood, Metal, Stone, Vinyl

Exterior Features Backs Onto Park/Trees, Trees/Shrubs, Landscaped, Remarks

Roof Asphalt Shingles

Construction Wood, Metal, Stone, Vinyl

Foundation Slab

Additional Information

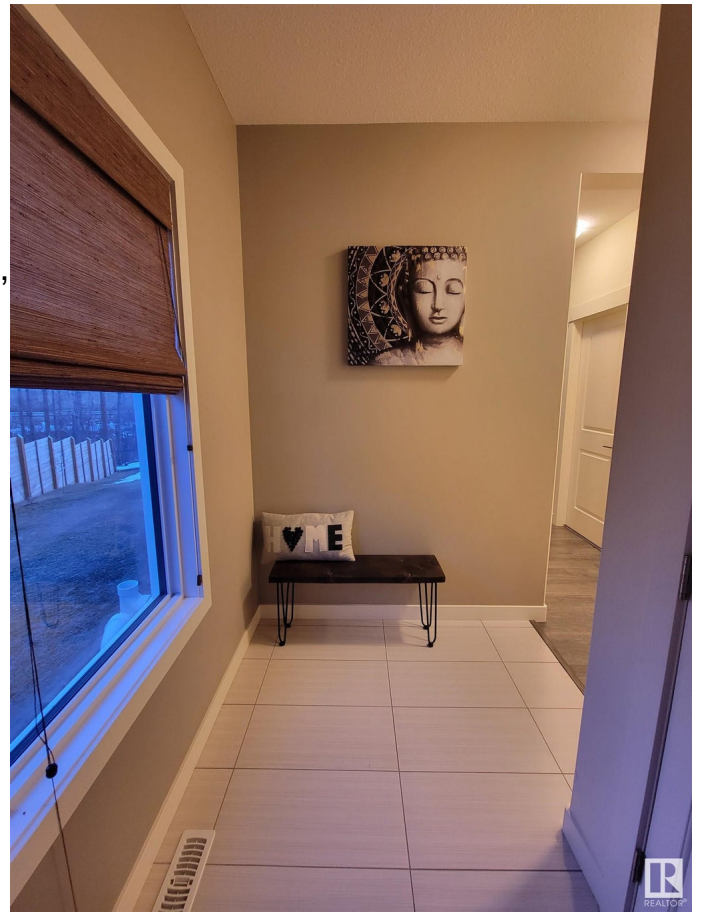
Date Listed May 25th, 2025

Days on Market 23

Zoning Zone 53

HOA Fees 210

HOA Fees Freq. Annually



DATA IS DEEMED RELIABLE BUT IS NOT GUARANTEED ACCURATE BY THE REALTORS® ASSOCIATION OF EDMONTON. COPYRIGHT 2025 BY THE REALTORS® ASSOCIATION OF EDMONTON. ALL RIGHTS RESERVED. Trademarks are owned or controlled by the Canadian Real Estate Association (CREA) and identify real estate professionals who are members of CREA (REALTOR®, REALTORS®) and/or the quality of services they provide (MLS®, Multiple Listing Service®)

Listing information last updated on June 17th, 2025 at 8:47am MDT