

\$195,000 - 2061 Saddleback Road, Edmonton

MLS® #E4440468

\$195,000

2 Bedroom, 1.00 Bathroom, 1,098 sqft

Condo / Townhouse on 0.00 Acres

Skyrattler, Edmonton, AB

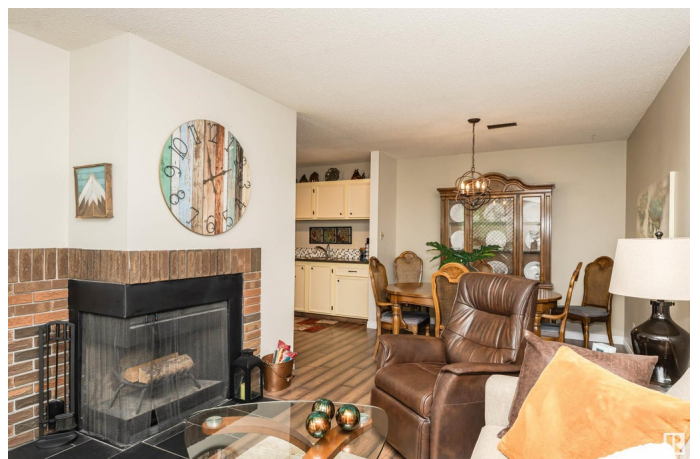
Spacious Bungalow Carriage Home in Southwest Edmonton. Includes 2 Bedrooms plus Den (could be converted to 3rd bdrm); Kitchen with walk-in pantry & built-in dishwasher; Living & Dining room with fireplace; Laundry area; Master bedroom with direct access to main bathroom; Deck with additional storage; & One assigned parking stall in front of home plus visitor parking. Home features one level living, in-suite laundry, den off front entrance, end unit w/extra window, upper floor with quiet view overlooking green area and corner wood-burning fireplace. Upgrades include high-efficiency furnace, hot water tank, laminate flooring & fixtures. Prof managed w/low condo fees. Enjoy the freedom from exterior maintenance including snow removal (including deck) & lawn care managed by the condo association. Pet-friendly, no age restrictions & well-managed. Live in quiet Skyrattler community w/ playground, ravine & walking trails. Close to LRT, YMCA, Century Pk, Shopping & Easy access to Southgate, U of A & Anthony Henday.

Built in 1978

Essential Information

MLS® # E4440468

Price \$195,000



Bedrooms	2
Bathrooms	1.00
Full Baths	1
Square Footage	1,098
Acres	0.00
Year Built	1978
Type	Condo / Townhouse
Sub-Type	Carriage
Style	Bungalow
Status	Active

Community Information

Address	2061 Saddleback Road
Area	Edmonton
Subdivision	Skyrattler
City	Edmonton
County	ALBERTA
Province	AB
Postal Code	T6J 4T4

Amenities

Amenities	Deck, No Smoking Home, Parking-Plug-Ins, Parking-Visitor, Storage-In-Suite, Storage-Locker Room
Parking Spaces	1
Parking	Stall

Interior

Appliances	Dishwasher-Built-In, Dryer, Refrigerator, Stove-Electric, Washer
Heating	Forced Air-1, Natural Gas
Fireplace	Yes
Fireplaces	Corner
Stories	1
Has Basement	Yes
Basement	None, No Basement

Exterior

Exterior	Wood, Vinyl
Exterior Features	Playground Nearby, Public Transportation, Shopping Nearby
Roof	Asphalt Shingles

Construction	Wood, Vinyl
Foundation	Concrete Perimeter

Additional Information

Date Listed	June 5th, 2025
Days on Market	11
Zoning	Zone 16
Condo Fee	\$376

DATA IS DEEMED RELIABLE BUT IS NOT GUARANTEED ACCURATE BY THE REALTORS® ASSOCIATION OF EDMONTON. COPYRIGHT 2025 BY THE REALTORS® ASSOCIATION OF EDMONTON. ALL RIGHTS RESERVED.Trademarks are owned or controlled by the Canadian Real Estate Association (CREA) and identify real estate professionals who are members of CREA (REALTOR®, REALTORS®) and/or the quality of services they provide (MLS®, Multiple Listing Service®)

Listing information last updated on June 16th, 2025 at 12:47pm MDT