

\$4,999,990

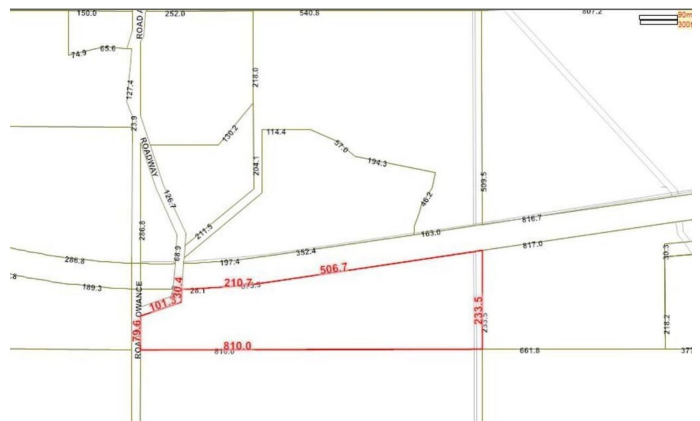
None, Rural Parkland County, AB

PRIME DEVELOPMENT OPPORTUNITY! 73 Acres of land just West of The Brickyard West Stony Plain! An exceptional opportunity to acquire a strategically located parcel of land just south of Highway 16a, ideally positioned right next to the fast-growing Suburb of Stony Plain.



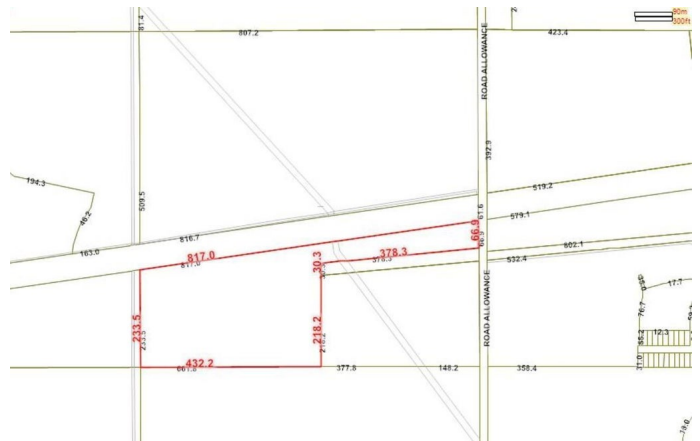
Essential Information

| | |
|-----------|-----------------|
| MLS® # | E4441582 |
| Price | \$4,999,990 |
| Bathrooms | 0.00 |
| Acres | 72.70 |
| Type | Rural |
| Sub-Type | Vacant Lot/Land |
| Status | Active |



Community Information

| | |
|-------------|-----------------------|
| Address | N/A |
| Area | Rural Parkland County |
| Subdivision | None |
| City | Rural Parkland County |
| County | ALBERTA |
| Province | AB |
| Postal Code | T7Z 0H9 |



Exterior

Exterior Features See Remarks

Additional Information

Date Listed June 10th, 2025
Days on Market 5
Zoning Zone 91

DATA IS DEEMED RELIABLE BUT IS NOT GUARANTEED ACCURATE BY THE REALTORS® ASSOCIATION OF EDMONTON. COPYRIGHT 2025 BY THE REALTORS® ASSOCIATION OF EDMONTON. ALL RIGHTS RESERVED.Trademarks are owned or controlled by the Canadian Real Estate Association (CREA) and identify real estate professionals who are members of CREA (REALTOR®, REALTORS®) and/or the quality of services they provide (MLS®, Multiple Listing Service®)
Listing information last updated on June 15th, 2025 at 8:32pm MDT