

Courtesy Of Jenny A Narine Of RE/MAX Elite

\$664,900 - 9843 92 Avenue, Edmonton

MLS® #E4441929

\$664,900

3 Bedroom, 1.50 Bathroom, 1,489 sqft
Single Family on 0.00 Acres

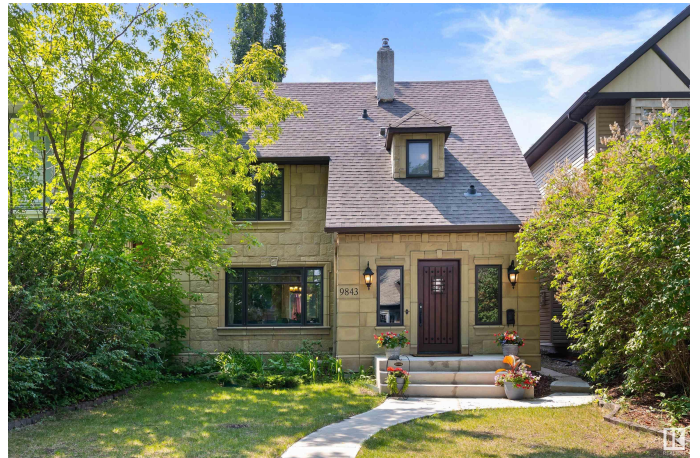
Strathcona, Edmonton, AB

TAKE TIME TO LIVE! When it comes to lasting impressions, this one can't be matched. Just steps from Mill Creek Ravine trail systems & the River Valley in the STRATHCONA neighborhood, this almost 1500 sq.ft. meticulously maintained home is RICH IN CHARM AND STEEPED IN BEAUTY. Sitting on a 4348 sq ft lot, highlights include an efficiently designed kitchen with ample storage and counter space including newer appliances and a Viking gas stove, updated bathrooms, newer windows, upgraded insulation, weeping tiles & sump pump, and an oversized patio door with triple pane glass leading out from the dining room into the south facing backyard. Punctuated with stately trees, the front and back yards have been LOVINGLY CARED FOR AND WILL NOT DISAPPOINT. Complete with a heated, drywalled & insulated oversized single garage with an expansive loft area. A RARE OPPORTUNITY!

Built in 1923

Essential Information

MLS® #	E4441929
Price	\$664,900
Bedrooms	3
Bathrooms	1.50



Full Baths	1
Half Baths	1
Square Footage	1,489
Acres	0.00
Year Built	1923
Type	Single Family
Sub-Type	Detached Single Family
Style	2 Storey
Status	Active

Community Information

Address	9843 92 Avenue
Area	Edmonton
Subdivision	Strathcona
City	Edmonton
County	ALBERTA
Province	AB
Postal Code	T6E 2V4

Amenities

Amenities	See Remarks
Parking	Heated, Insulated, Over Sized, Single Garage Detached

Interior

Appliances	Dishwasher-Built-In, Dryer, Microwave Hood Fan, Refrigerator, Stove-Gas, Washer
Heating	Forced Air-1, Natural Gas
Fireplace	Yes
Fireplaces	Mantel
Stories	3
Has Basement	Yes
Basement	Partial, Finished

Exterior

Exterior	Wood, Stucco
Exterior Features	Back Lane, Fenced, Landscaped, No Through Road, Public Transportation, Schools, Shopping Nearby, Treed Lot
Roof	Asphalt Shingles
Construction	Wood, Stucco

Foundation Concrete Perimeter

School Information

Elementary King Edward

Middle McKernan

High Strathcona

Additional Information

Date Listed June 12th, 2025

Days on Market 3

Zoning Zone 15

DATA IS DEEMED RELIABLE BUT IS NOT GUARANTEED ACCURATE BY THE REALTORS® ASSOCIATION OF EDMONTON. COPYRIGHT 2025 BY THE REALTORS® ASSOCIATION OF EDMONTON. ALL RIGHTS RESERVED. Trademarks are owned or controlled by the Canadian Real Estate Association (CREA) and identify real estate professionals who are members of CREA (REALTOR®, REALTORS®) and/or the quality of services they provide (MLS®, Multiple Listing Service®)

Listing information last updated on June 15th, 2025 at 9:17pm MDT