

\$369,702 - 16 Lark Street, Sherwood Park

MLS® #E4443880

\$369,702

3 Bedroom, 1.00 Bathroom, 994 sqft

Single Family on 0.00 Acres

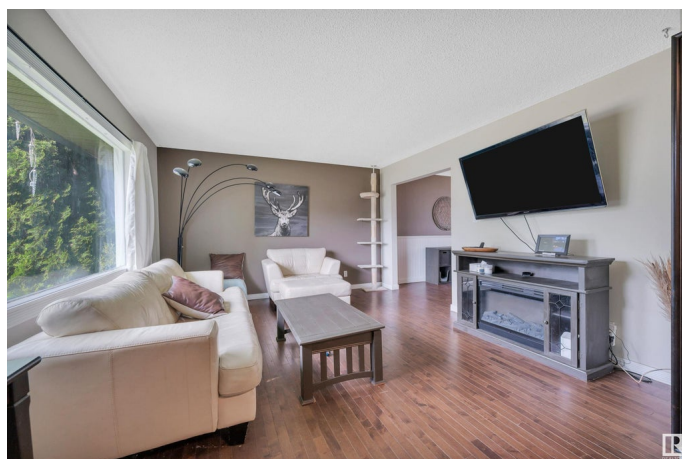
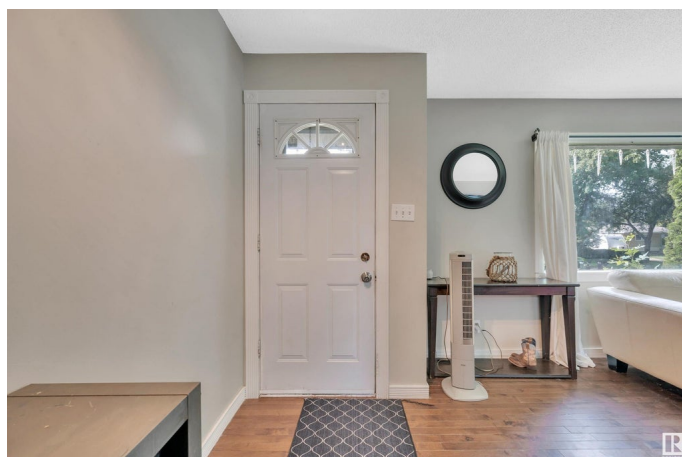
Brentwood (Sherwood Park), Sherwood Park,
AB

RENOVATED BUNGALOW in the Heart of Sherwood Park! CLOSE TO ALL AMENITIES - Across from Brentwood School and walking distance to Salisbury Composite High School and Centre in the Park/Broadmoor Lake/Park/Kinsmen Pool! GREAT SIZE RENOVATED KITCHEN and BATHROOM TOO! Partly FINISHED BASEMENT with Laminate Floors and KITCHENETTE/WET BAR! HARDWOOD THROUGHOUT MAIN! GREAT SIZE DECK and YARD! ~!WELCOME HOME!~

Built in 1966

Essential Information

MLS® #	E4443880
Price	\$369,702
Bedrooms	3
Bathrooms	1.00
Full Baths	1
Square Footage	994
Acres	0.00
Year Built	1966
Type	Single Family
Sub-Type	Detached Single Family
Style	Bungalow
Status	Active



Community Information

Address	16 Lark Street
Area	Sherwood Park
Subdivision	Brentwood (Sherwood Park)
City	Sherwood Park
County	ALBERTA
Province	AB
Postal Code	T8A 0J3

Amenities

Amenities	See Remarks
Parking	Front Drive Access, No Garage

Interior

Appliances	Dishwasher-Built-In, Dryer, Hood Fan, Refrigerator, Stove-Electric, Washer
Heating	Forced Air-1, Natural Gas
Stories	2
Has Basement	Yes
Basement	Full, Partially Finished

Exterior

Exterior	Wood, Stucco, Vinyl
Exterior Features	Fenced, Flat Site, Landscaped
Roof	Asphalt Shingles
Construction	Wood, Stucco, Vinyl
Foundation	Concrete Perimeter

Additional Information

Date Listed	June 23rd, 2025
Days on Market	8
Zoning	Zone 25

DATA IS DEEMED RELIABLE BUT IS NOT GUARANTEED ACCURATE BY THE REALTORS® ASSOCIATION OF EDMONTON. COPYRIGHT 2025 BY THE REALTORS® ASSOCIATION OF EDMONTON. ALL RIGHTS RESERVED. Trademarks are owned or controlled by the Canadian Real Estate Association (CREA) and identify real estate professionals who are members of CREA (REALTOR®, REALTORS®) and/or the quality of services they provide (MLS®, Multiple Listing Service®)

Listing information last updated on July 1st, 2025 at 1:48pm MDT