

# **\$574,900 - 483 Meadowview Drive, Sherwood Park**

MLS® #E4444650

**\$574,900**

4 Bedroom, 3.00 Bathroom, 1,417 sqft

Single Family on 0.00 Acres

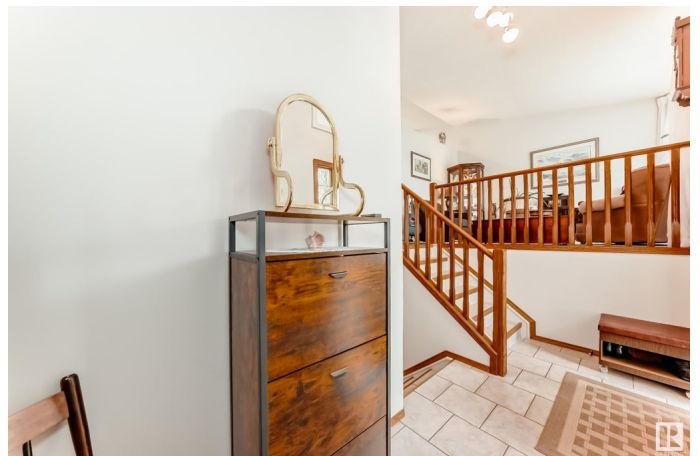
Clarkdale Meadows, Sherwood Park, AB

ABSOLUTELY IMMACULATE in Clarkdale Meadows! This lovingly maintained 2+2 bedroom and a den, 3 bathroom home shines with pride of ownership and thoughtful upgrades throughout. Enjoy new triple pane windows on the main floor, fresh paint, LED lighting, additional blown-in insulation, and a stunning kitchen renovation featuring quartz countertops and vinyl plank flooring! Main floor laundry, large storage area and an oversized double attached garage adds convenience, while the yard is a heavenly retreat with blooming shrubs, perennials and flowers from early spring to late fall! As well as fruit trees galore such as plums, cherries, apple, raspberries, haskaps and a glorious grapevine!! This one is truly special! "don't miss out!"

Built in 1997

## **Essential Information**

MLS® #	E4444650
Price	\$574,900
Bedrooms	4
Bathrooms	3.00
Full Baths	3
Square Footage	1,417
Acres	0.00
Year Built	1997



Type	Single Family
Sub-Type	Detached Single Family
Style	Bi-Level
Status	Active

### Community Information

Address	483 Meadowview Drive
Area	Sherwood Park
Subdivision	Clarkdale Meadows
City	Sherwood Park
County	ALBERTA
Province	AB
Postal Code	T8A 6L2

### Amenities

Amenities	Deck, No Smoking Home, Vaulted Ceiling, Vinyl Windows
Parking	Double Garage Attached

### Interior

Interior Features	ensuite bathroom
Appliances	Alarm/Security System, Dishwasher-Built-In, Dryer, Garage Control, Garage Opener, Microwave Hood Fan, Refrigerator, Storage Shed, Stove-Electric, Washer, Window Coverings
Heating	Forced Air-1, Natural Gas
Stories	2
Has Basement	Yes
Basement	Full, Finished

### Exterior

Exterior	Wood, Brick, Vinyl
Exterior Features	Fenced, Landscaped, Playground Nearby, Public Transportation, Schools, Shopping Nearby
Roof	Asphalt Shingles
Construction	Wood, Brick, Vinyl
Foundation	Concrete Perimeter

### Additional Information

Date Listed	June 27th, 2025
Days on Market	5
Zoning	Zone 25

DATA IS DEEMED RELIABLE BUT IS NOT GUARANTEED ACCURATE BY THE REALTORS® ASSOCIATION OF EDMONTON. COPYRIGHT 2025 BY THE REALTORS® ASSOCIATION OF EDMONTON. ALL RIGHTS RESERVED.Trademarks are owned or controlled by the Canadian Real Estate Association (CREA) and identify real estate professionals who are members of CREA (REALTOR®, REALTORS®) and/or the quality of services they provide (MLS®, Multiple Listing Service®)

Listing information last updated on July 2nd, 2025 at 1:02am MDT