

\$284,999 - 332 11603 Ellerslie Road, Edmonton

MLS® #E4449811

\$284,999

2 Bedroom, 2.00 Bathroom, 1,102 sqft

Condo / Townhouse on 0.00 Acres

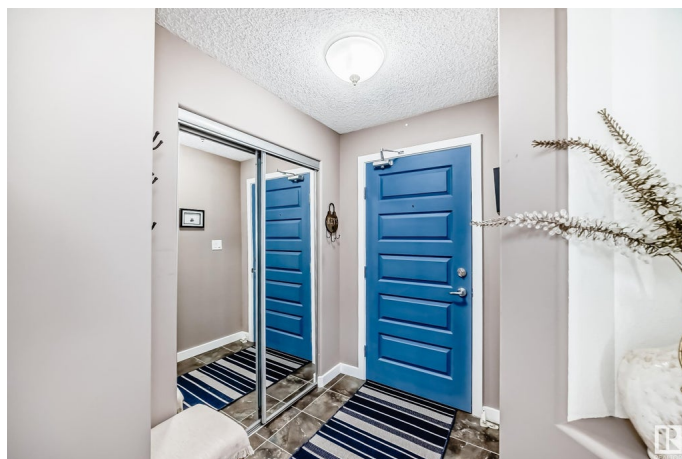
Rutherford (Edmonton), Edmonton, AB

Freshly painted and full of natural light due to all the window! This sunny 1100+ SqFt 2 bed, 2 bath corner unit in Rutherford is move-in ready! The open layout features an open concept kitchen with granite counters and an eat-up bar, a bright dining area, and spacious living room that opens onto a wraparound balcony overlooking green space—complete with gas BBQ hookup! Bedrooms are thoughtfully separated for privacy, with the primary offering a walk-through closet and beautiful ensuite. Enjoy in-suite laundry with storage, plus 2 titled stalls and a large storage cage. Building amenities include a guest suite, fitness centre, and social room. Close to Hwy 2, the Henday, South Edmonton Common, and future LRT. Low condo fees and pet friendly!

Built in 2007

Essential Information

MLS® #	E4449811
Price	\$284,999
Bedrooms	2
Bathrooms	2.00
Full Baths	2
Square Footage	1,102
Acres	0.00
Year Built	2007



Type	Condo / Townhouse
Sub-Type	Lowrise Apartment
Style	Single Level Apartment
Status	Active

Community Information

Address	332 11603 Ellerslie Road
Area	Edmonton
Subdivision	Rutherford (Edmonton)
City	Edmonton
County	ALBERTA
Province	AB
Postal Code	T6W 0J3

Amenities

Amenities	See Remarks
Parking Spaces	2
Parking	Heated, Underground, See Remarks

Interior

Interior Features	ensuite bathroom
Appliances	Dishwasher-Built-In, Dryer, Microwave Hood Fan, Refrigerator, Stove-Electric, Washer, Window Coverings
Heating	Baseboard, Hot Water, See Remarks
# of Stories	4
Stories	1
Has Basement	Yes
Basement	None, No Basement

Exterior

Exterior	Wood, Brick, Vinyl
Exterior Features	Airport Nearby, No Through Road
Roof	Asphalt Shingles
Construction	Wood, Brick, Vinyl
Foundation	Concrete Perimeter

Additional Information

Date Listed	July 25th, 2025
Days on Market	4

Zoning	Zone 55
Condo Fee	\$732

DATA IS DEEMED RELIABLE BUT IS NOT GUARANTEED ACCURATE BY THE REALTORS® ASSOCIATION OF EDMONTON. COPYRIGHT 2025 BY THE REALTORS® ASSOCIATION OF EDMONTON. ALL RIGHTS RESERVED. Trademarks are owned or controlled by the Canadian Real Estate Association (CREA) and identify real estate professionals who are members of CREA (REALTOR®, REALTORS®) and/or the quality of services they provide (MLS®, Multiple Listing Service®)

Listing information last updated on July 29th, 2025 at 5:32pm MDT