

# \$224,900 - 111 5280 Terwillegar Boulevard, Edmonton

MLS® #E4449814

**\$224,900**

2 Bedroom, 2.00 Bathroom, 872 sqft

Condo / Townhouse on 0.00 Acres

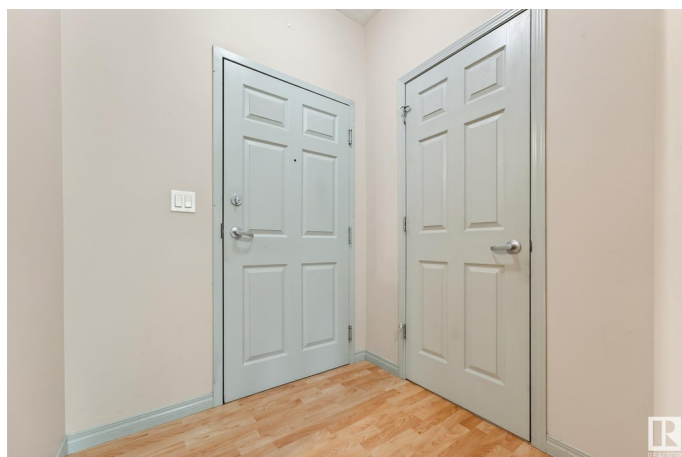
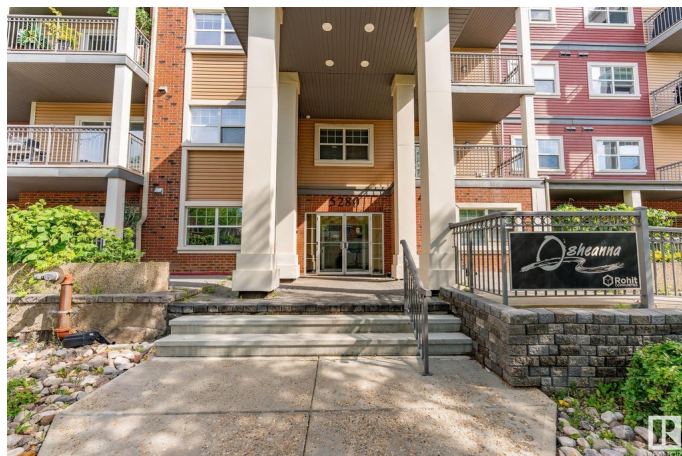
Terwillegar Towne, Edmonton, AB

Welcome to Osheanna Condo, nestled in the desirable community of Terwillegar! This well-maintained 2-bedroom unit offers a bright and functional layout, featuring a cozy fireplace in the living room and a spacious primary suite complete with a walk-in closet and private ensuite. Additional highlights include underground parking, a separate storage unit, and a convenient location just steps from parks, walking trails, and only minutes from the Anthony Henday. Whether you're a first-time buyer, downsizer, or investor, this home offers the perfect blend of comfort and convenience in a sought-after neighborhood.

Built in 2005

## Essential Information

MLS® #	E4449814
Price	\$224,900
Bedrooms	2
Bathrooms	2.00
Full Baths	2
Square Footage	872
Acres	0.00
Year Built	2005
Type	Condo / Townhouse
Sub-Type	Lowrise Apartment



Style	Multi Level Apartment
Status	Active

### Community Information

Address	111 5280 Terwillegar Boulevard
Area	Edmonton
Subdivision	Terwillegar Towne
City	Edmonton
County	ALBERTA
Province	AB
Postal Code	T6R 3T9

### Amenities

Amenities	No Animal Home, Parking-Visitor, Patio, Recreation Room/Centre
Parking	Underground

### Interior

Interior Features	ensuite bathroom
Appliances	Dishwasher-Built-In, Dryer, Refrigerator, Stove-Electric, Washer, Window Coverings
Heating	Forced Air-1, Natural Gas
Fireplace	Yes
Fireplaces	Mantel
# of Stories	4
Stories	4
Has Basement	Yes
Basement	None, No Basement

### Exterior

Exterior	Wood, Brick, Vinyl
Exterior Features	Picnic Area, Playground Nearby, Public Transportation, Schools, Shopping Nearby
Roof	Asphalt Shingles
Construction	Wood, Brick, Vinyl
Foundation	Concrete Perimeter

### Additional Information

Date Listed	July 25th, 2025
Days on Market	4

Zoning	Zone 14
HOA Fees	138
HOA Fees Freq.	Annually
Condo Fee	\$499

DATA IS DEEMED RELIABLE BUT IS NOT GUARANTEED ACCURATE BY THE REALTORS® ASSOCIATION OF EDMONTON. COPYRIGHT 2025 BY THE REALTORS® ASSOCIATION OF EDMONTON. ALL RIGHTS RESERVED. Trademarks are owned or controlled by the Canadian Real Estate Association (CREA) and identify real estate professionals who are members of CREA (REALTOR®, REALTORS®) and/or the quality of services they provide (MLS®, Multiple Listing Service®)

Listing information last updated on July 29th, 2025 at 7:02pm MDT