

\$800,000 - 2544 Hwy 770, Rural Leduc County

MLS® #E4450011

\$800,000

6 Bedroom, 4.00 Bathroom, 4,532 sqft

Rural on 17.68 Acres

None, Rural Leduc County, AB

PRIVATE RIVER VALLEY ACREAGE:

2-storey with detached triple garage
(34Wx24L, 220V, insulated) on 17.68 acres
OUT OF SUBDIVISION, just west of Genesee

Bridge Boat Launch on the North Sask River.

HUGE 4,530 sq ft (plus full basement) home
with massive bachelor suite connected by a

fully enclosed breezeway/mudroom. On the
main level: front office/bedroom, large formal
dining room, living room w/ wood-burning

fireplace, 2-pc powder room w/ laundry and a
gourmet kitchen with centre island, built-in
dishwasher, wall oven and walk-in pantry.

Upstairs: 2 full bathrooms and 3 large
bedrooms including the owner's suite with
walk-in closet & 3-pc ensuite. Basement:

bedroom, 2-pc powder room, spacious rec
area and plenty of storage space. BACHLORE

SUITE: main floor with 4-piece bathroom,
kitchenette and walk-in closet; upstairs

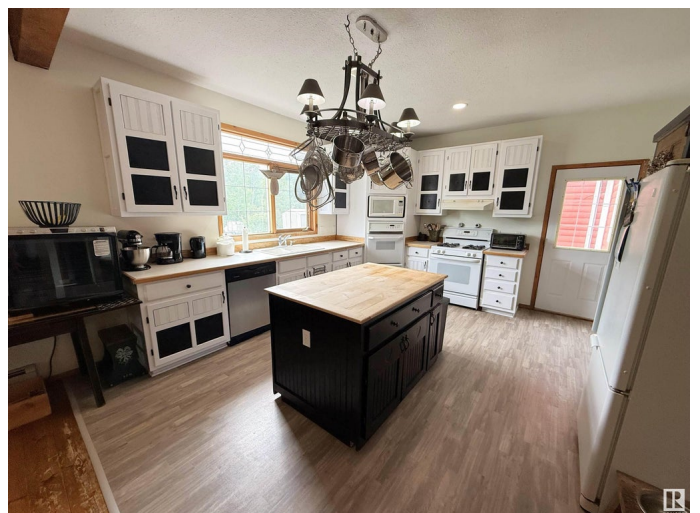
24'x32' bonus room with sink, drawers
& counter space. Outside: covered decks, fire
pit, garden beds, chicken coop & run &
storage sheds. So much opportunity on this
peaceful, treed acreage

Built in 1998

Essential Information

MLS® # E4450011

Price \$800,000



Bedrooms	6
Bathrooms	4.00
Full Baths	3
Half Baths	2
Square Footage	4,532
Acres	17.68
Year Built	1998
Type	Rural
Sub-Type	Detached Single Family
Style	2 Storey
Status	Active

Community Information

Address	2544 Hwy 770
Area	Rural Leduc County
Subdivision	None
City	Rural Leduc County
County	ALBERTA
Province	AB
Postal Code	T0C 2T0

Amenities

Features	Bar, Ceiling 9 ft., Deck, Dog Run-Fenced In, Fire Pit, Front Porch, No Smoking Home, R.V. Storage, Wet Bar, Workshop, Natural Gas BBQ Hookup
Parking Spaces	6

Interior

Interior Features	ensuite bathroom
Heating	Baseboard, Hot Water, Natural Gas
Fireplace	Yes
Stories	3
Has Basement	Yes
Basement	Full, Finished

Exterior

Exterior	Wood
Exterior Features	Boating, Hillside, No Back Lane, Private Setting, Ravine View, Recreation Use, River Valley View, River View, Rolling Land, Treed Lot,

	Vegetable Garden
Construction	Wood
Foundation	Preserved Wood

Additional Information

Date Listed July 28th, 2025

Days on Market 51

Zoning Zone 90

DATA IS DEEMED RELIABLE BUT IS NOT GUARANTEED ACCURATE BY THE REALTORS® ASSOCIATION OF EDMONTON. COPYRIGHT 2025 BY THE REALTORS® ASSOCIATION OF EDMONTON. ALL RIGHTS RESERVED. Trademarks are owned or controlled by the Canadian Real Estate Association (CREA) and identify real estate professionals who are members of CREA (REALTOR®, REALTORS®) and/or the quality of services they provide (MLS®, Multiple Listing Service®)

Listing information last updated on September 17th, 2025 at 8:17am MDT