

\$684,900 - 10332 142 Street, Edmonton

MLS® #E4450404

\$684,900

5 Bedroom, 3.50 Bathroom, 1,854 sqft

Single Family on 0.00 Acres

Grovenor, Edmonton, AB

Located in the heart of Grovenor & BACKING A SCHOOL, PARK & Outdoor Rink - this home is sure to impress! The main floor is sunfilled, with 9' ceilings, and beautiful hardwood floors! A welcoming front entrance w/ custom built-ins is very functional and welcomes you in! The front living room w/ gas fireplace leads you to a modern central kitchen w/ a sprawling island, plenty of counter space & storage cabinets, and stainless steel appliances. A large dining space overlooking the back yard, mudroom & 2 pce bathroom complete this main level. Upstairs features 3 good sized bedrooms incl. the primary suite w/ walk-in closet & 4 pce ensuite, a beautiful 4 pce bathroom, upstairs laundry, and a small flex space perfect for a small open office. The basement has a private entrance and is fully finished as a 2 BEDROOM BASEMENT SUITE, currently renting out as a functioning 5 Star AirBNB w/ 2nd kitchen & laundry! Completing this property is a Double Car Det. Garage! Prime YEG location - steps to Glenora's Westblock!

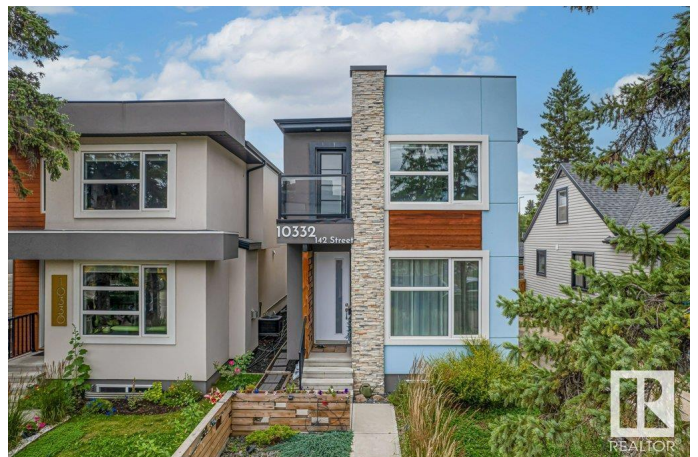
Built in 2017

Essential Information

MLS® # E4450404

Price \$684,900

Bedrooms 5



Bathrooms	3.50
Full Baths	3
Half Baths	1
Square Footage	1,854
Acres	0.00
Year Built	2017
Type	Single Family
Sub-Type	Detached Single Family
Style	2 Storey
Status	Active

Community Information

Address	10332 142 Street
Area	Edmonton
Subdivision	Grovenor
City	Edmonton
County	ALBERTA
Province	AB
Postal Code	T5N 2P1

Amenities

Amenities	On Street Parking, Ceiling 9 ft., Closet Organizers, Deck, Detectors Smoke, Exterior Walls- 2"x6", Hot Water Natural Gas, Vinyl Windows, See Remarks
Parking	Double Garage Detached

Interior

Interior Features	ensuite bathroom
Appliances	Dishwasher-Built-In, Furniture Included, Garage Control, Garage Opener, Hood Fan, Oven-Microwave, Stove-Electric, Window Coverings, See Remarks, Dryer-Two, Refrigerators-Two, Washers-Two
Heating	Forced Air-1, Natural Gas
Fireplace	Yes
Fireplaces	Mantel, Stone Facing
Stories	3
Has Suite	Yes
Has Basement	Yes
Basement	Full, Finished

Exterior

Exterior	Wood, Stone, Stucco
Exterior Features	Back Lane, Backs Onto Park/Trees, Fenced, Flat Site, Landscaped, Low Maintenance Landscape, Picnic Area, Playground Nearby, Public Transportation, Schools, Shopping Nearby
Roof	Asphalt Shingles
Construction	Wood, Stone, Stucco
Foundation	Concrete Perimeter

Additional Information

Date Listed	July 30th, 2025
Days on Market	2
Zoning	Zone 21

DATA IS DEEMED RELIABLE BUT IS NOT GUARANTEED ACCURATE BY THE REALTORS® ASSOCIATION OF EDMONTON. COPYRIGHT 2025 BY THE REALTORS® ASSOCIATION OF EDMONTON. ALL RIGHTS RESERVED.Trademarks are owned or controlled by the Canadian Real Estate Association (CREA) and identify real estate professionals who are members of CREA (REALTOR®, REALTORS®) and/or the quality of services they provide (MLS®, Multiple Listing Service®)

Listing information last updated on August 1st, 2025 at 4:03pm MDT