

\$750,000 - 42 53522 Rge Road 272, Rural Parkland County

MLS® #E4450628

\$750,000

5 Bedroom, 3.00 Bathroom, 1,650 sqft
Rural on 2.05 Acres

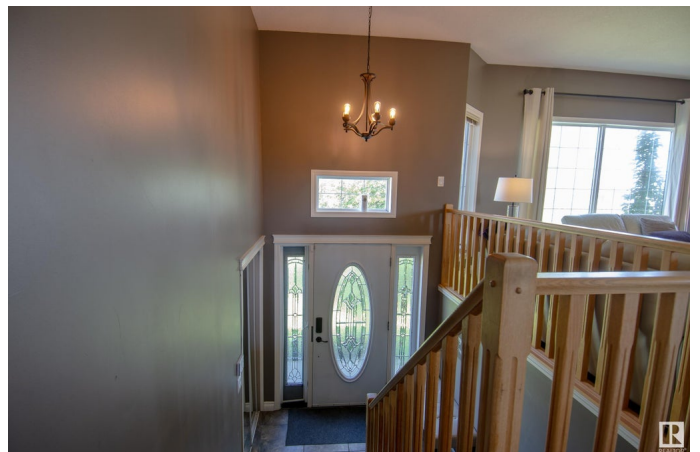
Century Estates (Parkland), Rural Parkland County, AB

Set on 2.05 acres in sought-after Century Estates, this spacious 1,650 sq.ft. bi-level blends country living with the convenience of being just minutes from Spruce Grove. Designed for comfort and space, it offers 5 bedrooms, 3 full baths, and generous gathering areas. The updated exterior features new siding and roof, while inside you'll find fresh paint, new flooring, and an upgraded fridge. The oversized 34' x 48' heated garage—plus room for a workshop—provides unmatched utility. Recent landscaping, including nearly \$10k in grading and yard improvements, enhances the fully fenced property, which includes mature fruit trees, a fire pit, and a storage shed. A covered southwest-facing deck is perfect for outdoor living. Inside, 9' ceilings, two fireplaces, and a large kitchen with ample cabinetry, pot drawers, and a corner pantry add function and style. Century Estates offers a quiet, cul-de-sac setting with space to breathe—just five minutes from town.

Built in 2006

Essential Information

MLS® # E4450628



Price	\$750,000
Bedrooms	5
Bathrooms	3.00
Full Baths	3
Square Footage	1,650
Acres	2.05
Year Built	2006
Type	Rural
Sub-Type	Detached Single Family
Style	Bi-Level
Status	Active

Community Information

Address	42 53522 Rge Road 272
Area	Rural Parkland County
Subdivision	Century Estates (Parkland)
City	Rural Parkland County
County	ALBERTA
Province	AB
Postal Code	T7X 3N2

Amenities

Features	Air Conditioner, Ceiling 9 ft., Deck, Fire Pit, 9 ft. Basement Ceiling
Parking Spaces	12

Interior

Interior Features	ensuite bathroom
Heating	Forced Air-1, Natural Gas
Fireplace	Yes
Stories	2
Has Basement	Yes
Basement	Full, Finished

Exterior

Exterior	Wood
Exterior Features	Corner Lot, Fenced, Flat Site, Fruit Trees/Shrubs
Construction	Wood
Foundation	Concrete Perimeter

Additional Information

Date Listed July 31st, 2025

Days on Market 2

Zoning Zone 70

DATA IS DEEMED RELIABLE BUT IS NOT GUARANTEED ACCURATE BY THE REALTORS® ASSOCIATION OF EDMONTON. COPYRIGHT 2025 BY THE REALTORS® ASSOCIATION OF EDMONTON. ALL RIGHTS RESERVED. Trademarks are owned or controlled by the Canadian Real Estate Association (CREA) and identify real estate professionals who are members of CREA (REALTOR®, REALTORS®) and/or the quality of services they provide (MLS®, Multiple Listing Service®)

Listing information last updated on August 2nd, 2025 at 12:02am MDT