

\$129,000 - 137 1 Street, Rural Parkland County

MLS® #E4450678

\$129,000

0 Bedroom, 0.00 Bathroom,
Rural on 0.16 Acres

Seba Beach, Rural Parkland County, AB

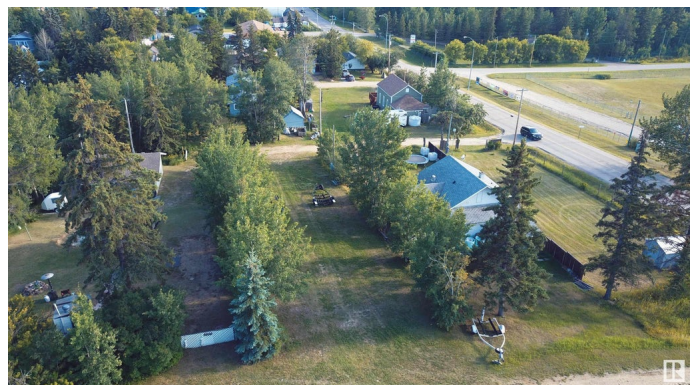
Don't miss this opportunity to own a ready-to-build 50' x 140' lot in vibrant Seba Beach! Set on a 0.16-acre sloped lot, this parcel combines privacy with proximity. Nestled between mature trees, the land is already sodded and includes two convenient access points via a front road and back alley. Power is already installed—just bring your builder. Located just a short walk from the beach, local shops, restaurants, a driving range, golf course, and many more summer attractions, this lot offers year-round recreation and relaxation in one of Alberta's most sought-after lake communities

Essential Information

MLS® #	E4450678
Price	\$129,000
Bathrooms	0.00
Acres	0.16
Type	Rural
Sub-Type	Vacant Lot/Land
Status	Active

Community Information

Address	137 1 Street
Area	Rural Parkland County
Subdivision	Seba Beach



City	Rural Parkland County
County	ALBERTA
Province	AB
Postal Code	T0E 2B0

Exterior

Exterior Features Back Lane, Cul-De-Sac, Golf Nearby, Landscaped, No Through Road, Private Setting, Sloping Lot, Treed Lot

Additional Information

Date Listed	July 31st, 2025
Days on Market	2
Zoning	Zone 93

DATA IS DEEMED RELIABLE BUT IS NOT GUARANTEED ACCURATE BY THE REALTORS® ASSOCIATION OF EDMONTON. COPYRIGHT 2025 BY THE REALTORS® ASSOCIATION OF EDMONTON. ALL RIGHTS RESERVED. Trademarks are owned or controlled by the Canadian Real Estate Association (CREA) and identify real estate professionals who are members of CREA (REALTOR®, REALTORS®) and/or the quality of services they provide (MLS®, Multiple Listing Service®)

Listing information last updated on August 2nd, 2025 at 6:17am MDT