

Courtesy Of Brian C Cyr Of RE/MAX Elite

## \$399,900 - 29 150 Everitt Dr, St. Albert

MLS® #E4450863

**\$399,900**

4 Bedroom, 2.50 Bathroom, 1,435 sqft

Condo / Townhouse on 0.00 Acres

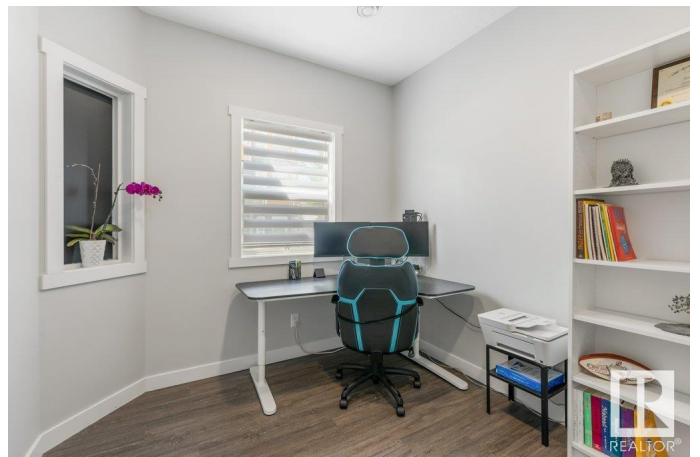
Erin Ridge North, St. Albert, AB

Welcome to Valencia on the Park! This stylish 4-bed, 2.5-bath townhouse offers upscale finishes, a double attached garage, a double driveway and A/C. The entry level features a versatile 4th bedroom—perfect for a home office or guests. The open-concept main floor boasts a chef-inspired kitchen with white cabinetry, quartz counters, Stainless Steel appliances, a large island and a modern sliding barn door to the powder room. Enjoy two private balconies—one off the kitchen and one off the living room. Upstairs, find 3 bedrooms, including a bright primary suite with large windows, walk-in closet, 3-pc ensuite, plus a 4-pc family bath and upper laundry. Located near schools, shopping, groceries, and scenic trails, this move-in-ready home has it all!

Built in 2021

### Essential Information

MLS® #	E4450863
Price	\$399,900
Bedrooms	4
Bathrooms	2.50
Full Baths	2
Half Baths	1
Square Footage	1,435
Acres	0.00



Year Built	2021
Type	Condo / Townhouse
Sub-Type	Townhouse
Style	3 Storey
Status	Active

### Community Information

Address	29 150 Everitt Dr
Area	St. Albert
Subdivision	Erin Ridge North
City	St. Albert
County	ALBERTA
Province	AB
Postal Code	T8N 7R8

### Amenities

Amenities	Ceiling 9 ft., Deck
Parking	Double Garage Attached

### Interior

Interior Features	ensuite bathroom
Appliances	Air Conditioning-Central, Dishwasher-Built-In, Dryer, Hood Fan, Refrigerator, Stove-Electric, Washer, Window Coverings
Heating	Forced Air-1, Natural Gas
Stories	3
Has Basement	Yes
Basement	None, No Basement

### Exterior

Exterior	Wood, Vinyl
Exterior Features	Fenced, Landscaped, Playground Nearby, Schools
Roof	Asphalt Shingles
Construction	Wood, Vinyl
Foundation	Concrete Perimeter

### Additional Information

Date Listed	August 1st, 2025
Days on Market	1
Zoning	Zone 24

Condo Fee                      \$262

DATA IS DEEMED RELIABLE BUT IS NOT GUARANTEED ACCURATE BY THE REALTORS® ASSOCIATION OF EDMONTON. COPYRIGHT 2025 BY THE REALTORS® ASSOCIATION OF EDMONTON. ALL RIGHTS RESERVED.Trademarks are owned or controlled by the Canadian Real Estate Association (CREA) and identify real estate professionals who are members of CREA (REALTOR®, REALTORS®) and/or the quality of services they provide (MLS®, Multiple Listing Service®)

Listing information last updated on August 2nd, 2025 at 4:32pm MDT