

\$1,001,214 - 21 Essex Close, St. Albert

MLS® #E4453279

\$1,001,214

5 Bedroom, 4.00 Bathroom, 4,456 sqft
Single Family on 0.00 Acres

Erin Ridge, St. Albert, AB

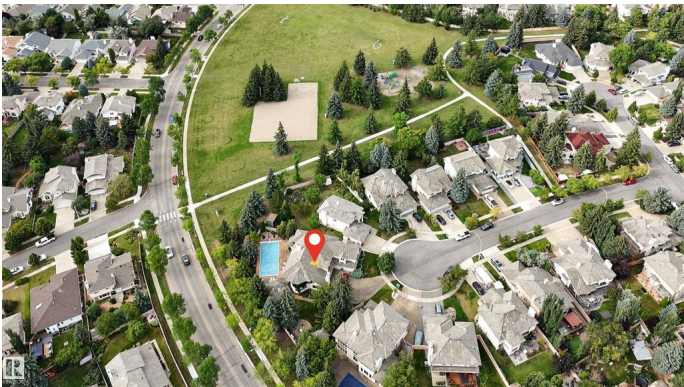
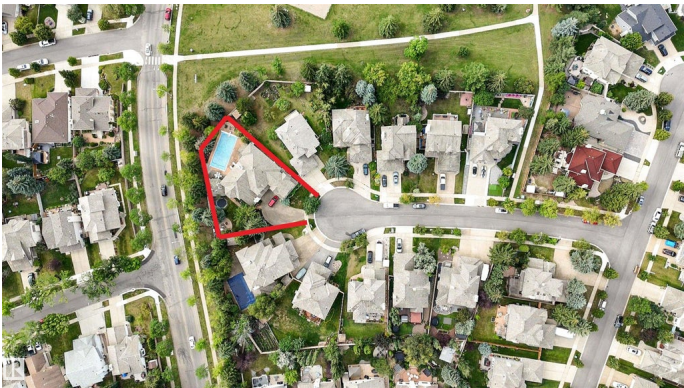
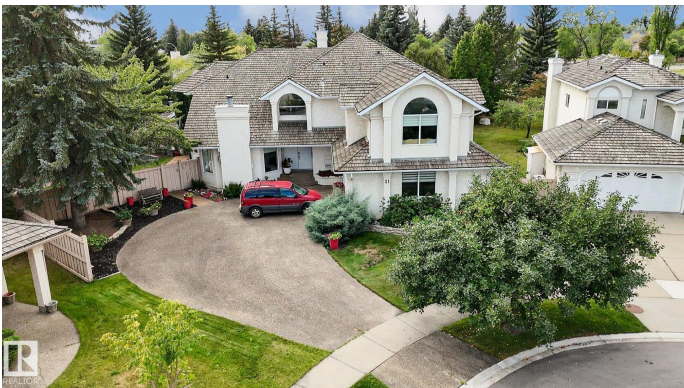
Exceptional opportunity to own a spacious 5-bedroom, 4-bathroom home in the desirable Erin Ridge neighborhood of St. Albert, backing onto the peaceful Erin Ridge Park. This 2-storey residence offers approximately 414.9 m² (4,465 sqft) of above-grade living space on a generous 1,237 m² (13,314 sqft) lot, featuring a private backyard with an outdoor pool and an attached double garage. Located on a quiet cul-de-sac, the home is close to schools, parks, shopping, and provides convenient access to Anthony Henday Drive.

Built in 1990

Essential Information

MLS® #	E4453279
Price	\$1,001,214
Bedrooms	5
Bathrooms	4.00
Full Baths	4
Square Footage	4,456
Acres	0.00
Year Built	1990
Type	Single Family
Sub-Type	Detached Single Family
Style	2 Storey
Status	Active

Community Information



Address	21 Essex Close
Area	St. Albert
Subdivision	Erin Ridge
City	St. Albert
County	ALBERTA
Province	AB
Postal Code	T8N 5S9

Amenities

Amenities	See Remarks
Parking	Double Garage Attached

Interior

Interior Features	ensuite bathroom
Appliances	See Remarks
Heating	Forced Air-1, Natural Gas
Stories	2
Has Basement	Yes
Basement	See Remarks, Partially Finished

Exterior

Exterior	Wood, Stucco
Exterior Features	Backs Onto Park/Trees, Cul-De-Sac, Fruit Trees/Shrubs, Park/Reserve, Playground Nearby, Treed Lot
Roof	Wood Shingles
Construction	Wood, Stucco
Foundation	Concrete Perimeter

Additional Information

Date Listed	August 15th, 2025
Days on Market	1
Zoning	Zone 24

DATA IS DEEMED RELIABLE BUT IS NOT GUARANTEED ACCURATE BY THE REALTORS® ASSOCIATION OF EDMONTON. COPYRIGHT 2025 BY THE REALTORS® ASSOCIATION OF EDMONTON. ALL RIGHTS RESERVED. Trademarks are owned or controlled by the Canadian Real Estate Association (CREA) and identify real estate professionals who are members of CREA (REALTOR®, REALTORS®) and/or the quality of services they provide (MLS®, Multiple Listing Service®)

Listing information last updated on August 16th, 2025 at 3:02pm MDT