

## \$375,000 - 12822 70 Street, Edmonton

MLS® #E4453748

### \$375,000

3 Bedroom, 2.00 Bathroom, 892 sqft  
Single Family on 0.00 Acres

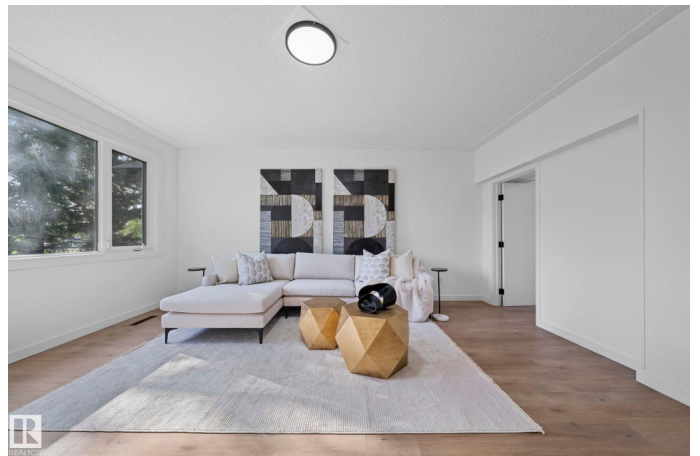
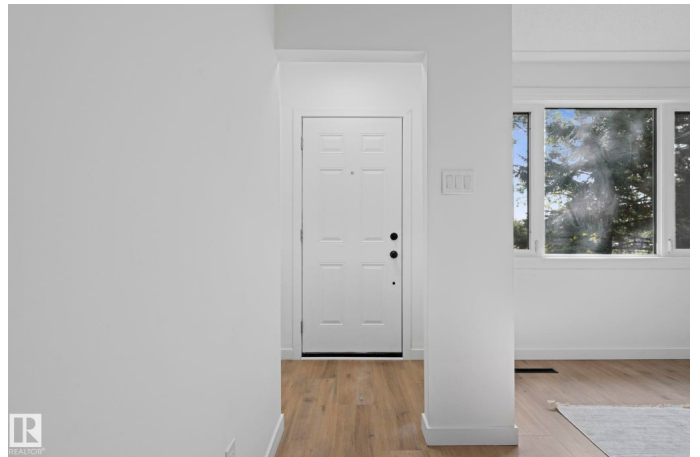
Balwin, Edmonton, AB

Welcome home to this beautifully renovated gem in Balwin! Modern European charm meets functionality with high-quality laminate flooring, stylish eat-in kitchen, and 2 +1 spacious bedrooms. Enjoy newer windows, upgraded electrical, and premium stainless steel appliances. The fully finished basement with separate entrance offers a large family room, bedroom, and full bath ideal for guests or rental potential. Outside, relax in your private west-facing yard, perfect for BBQs and gatherings. Oversized single garage plus extra rear parking with room for an RV or boat. All in a fantastic location steps to parks, schools, shopping, dining, and transit. Perfect for investors, families, or couples!

Built in 1960

### Essential Information

MLS® #	E4453748
Price	\$375,000
Bedrooms	3
Bathrooms	2.00
Full Baths	2
Square Footage	892
Acres	0.00
Year Built	1960
Type	Single Family



Sub-Type	Detached Single Family
Style	Raised Bungalow
Status	Active

### **Community Information**

Address	12822 70 Street
Area	Edmonton
Subdivision	Balwin
City	Edmonton
County	ALBERTA
Province	AB
Postal Code	T5C 0J8

### **Amenities**

Amenities	On Street Parking, Hot Water Natural Gas, No Animal Home, No Smoking Home, R.V. Storage, Vinyl Windows
Parking Spaces	3
Parking	RV Parking, Single Garage Detached

### **Interior**

Appliances	Dishwasher-Built-In, Dryer, Microwave Hood Fan, Refrigerator, Stove-Electric, Washer, Garage Heater
Heating	Forced Air-1, Natural Gas
Stories	2
Has Basement	Yes
Basement	Full, Finished

### **Exterior**

Exterior	Concrete, Brick, Stucco, Wood
Exterior Features	Back Lane, Backs Onto Park/Trees, Fenced, Low Maintenance Landscape, Paved Lane, Playground Nearby, Private Setting, Schools, Shopping Nearby
Roof	Asphalt Shingles
Construction	Concrete, Brick, Stucco, Wood
Foundation	Concrete Perimeter

### **School Information**

Elementary	Balwin School
Middle	Steele Heights School
High	Archbishop O'Leary

## Additional Information

Date Listed August 19th, 2025

Days on Market 4

Zoning Zone 02

DATA IS DEEMED RELIABLE BUT IS NOT GUARANTEED ACCURATE BY THE REALTORS® ASSOCIATION OF EDMONTON. COPYRIGHT 2025 BY THE REALTORS® ASSOCIATION OF EDMONTON. ALL RIGHTS RESERVED. Trademarks are owned or controlled by the Canadian Real Estate Association (CREA) and identify real estate professionals who are members of CREA (REALTOR®, REALTORS®) and/or the quality of services they provide (MLS®, Multiple Listing Service®)

Listing information last updated on August 23rd, 2025 at 11:47am MDT