

\$469,900 - 3725 137a Avenue, Edmonton

MLS® #E4454214

\$469,900

3 Bedroom, 2.50 Bathroom, 1,461 sqft

Single Family on 0.00 Acres

Clareview Town Centre, Edmonton, AB

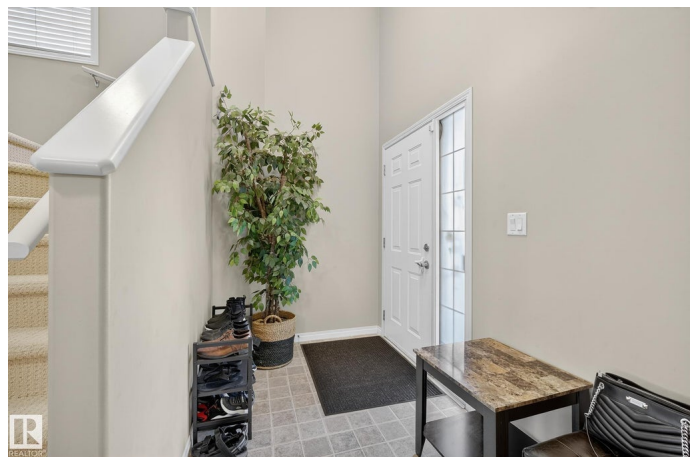
Talk about VALUE! This beautifully maintained home showcases exceptional pride of ownership throughout. Step inside to a welcoming vaulted foyer that sets the tone for the spacious and inviting interior. The kitchen features ample upgraded cabinetry and generous counter space, perfect for both everyday living and entertaining. The great room offers a cozy corner fireplace and flows seamlessly into the dining area. From the dining room access the large, private backyard—an ideal space for relaxing or hosting. Upstairs, the gorgeous primary suite boasts vaulted ceilings, a W/I closet, and 4-pce ensuite. Two spacious secondary bedrooms and laundry complete the second floor. Downstairs, the fully finished basement includes a versatile flex room and abundant storage options. Located near the rec center, public transit, shopping, schools, and nearly every amenity you could need! Additional highlights include AC and a large storage shed—just a few of the many extras that make this feel like home.

Built in 2004

Essential Information

MLS® # E4454214

Price \$469,900



Bedrooms	3
Bathrooms	2.50
Full Baths	2
Half Baths	1
Square Footage	1,461
Acres	0.00
Year Built	2004
Type	Single Family
Sub-Type	Detached Single Family
Style	2 Storey
Status	Active

Community Information

Address	3725 137a Avenue
Area	Edmonton
Subdivision	Clareview Town Centre
City	Edmonton
County	ALBERTA
Province	AB
Postal Code	T5Y 3G7

Amenities

Amenities	Air Conditioner, Deck
Parking Spaces	4
Parking	Double Garage Attached

Interior

Interior Features	ensuite bathroom
Appliances	Air Conditioning-Central, Alarm/Security System, Dishwasher-Built-In, Dryer, Freezer, Microwave Hood Fan, Refrigerator, Storage Shed, Stove-Electric, Washer, Window Coverings, TV Wall Mount
Heating	Forced Air-1, Natural Gas
Fireplace	Yes
Fireplaces	Tile Surround
Stories	3
Has Basement	Yes
Basement	Full, Finished

Exterior

Exterior	Wood, Vinyl
Exterior Features	Fenced, Flat Site, Landscaped, No Back Lane, Public Transportation, Schools, Shopping Nearby
Roof	Asphalt Shingles
Construction	Wood, Vinyl
Foundation	Concrete Perimeter

Additional Information

Date Listed	August 22nd, 2025
Days on Market	1
Zoning	Zone 35

DATA IS DEEMED RELIABLE BUT IS NOT GUARANTEED ACCURATE BY THE REALTORS® ASSOCIATION OF EDMONTON. COPYRIGHT 2025 BY THE REALTORS® ASSOCIATION OF EDMONTON. ALL RIGHTS RESERVED. Trademarks are owned or controlled by the Canadian Real Estate Association (CREA) and identify real estate professionals who are members of CREA (REALTOR®, REALTORS®) and/or the quality of services they provide (MLS®, Multiple Listing Service®)

Listing information last updated on August 23rd, 2025 at 8:32am MDT