

\$520,000 - 27 Halden Crescent, Spruce Grove

MLS® #E4454260

\$520,000

3 Bedroom, 2.50 Bathroom, 1,098 sqft

Single Family on 0.00 Acres

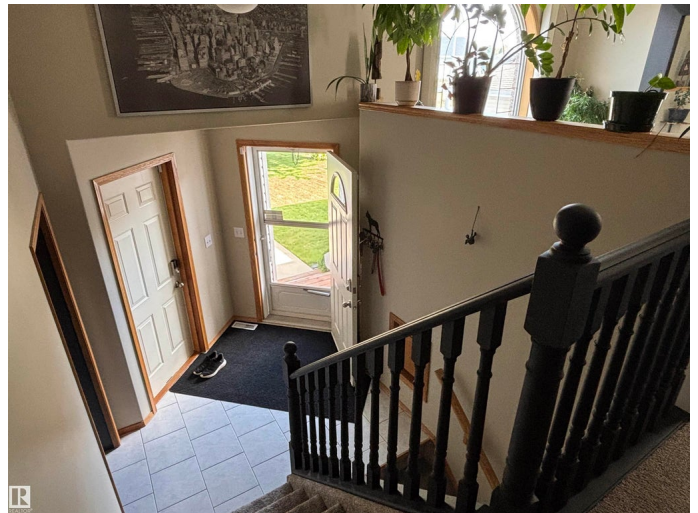
Hilldowns, Spruce Grove, AB

Choice location backing on a Creek, Park, Playground, Soccer Field, Basketball Court and Walking Trails. In winter there is a skating oval as well. This impressive 3 Bedroom & 3 Bathroom Bilevel is fully finished on both levels. The open plan basement features large windows, fireplace & wet bar. Central Air Conditioning for the summer and a Fireplace for the winter! The garage is a double. The west facing back yard features a raised and covered deck and a multi purpose 12' x 8' Gazebo for you to enjoy. This turn key beauty awaits your arrival.

Built in 1996

Essential Information

MLS® #	E4454260
Price	\$520,000
Bedrooms	3
Bathrooms	2.50
Full Baths	2
Half Baths	1
Square Footage	1,098
Acres	0.00
Year Built	1996
Type	Single Family
Sub-Type	Detached Single Family
Style	Bi-Level



Status Active

Community Information

Address 27 Halden Crescent
Area Spruce Grove
Subdivision Hilldowns
City Spruce Grove
County ALBERTA
Province AB
Postal Code T7X 2V6

Amenities

Amenities Deck, Exterior Walls- 2"x6", Gazebo
Parking Spaces 4
Parking Double Garage Attached
Is Waterfront Yes

Interior

Interior Features ensuite bathroom
Appliances Air Conditioning-Central, Dishwasher-Built-In, Dryer, Garage Opener, Refrigerator, Stove-Electric, Vacuum Systems, Washer, Window Coverings
Heating Forced Air-1, Natural Gas
Fireplace Yes
Fireplaces Glass Door
Stories 2
Has Basement Yes
Basement Full, Finished

Exterior

Exterior Wood, Brick, Vinyl
Exterior Features Backs Onto Park/Trees, Creek, Fenced, Landscaped, No Back Lane, No Through Road, Playground Nearby, Private Setting, Public Transportation, Schools, Shopping Nearby, See Remarks
Roof Asphalt Shingles
Construction Wood, Brick, Vinyl
Foundation Concrete Perimeter

Additional Information

Date Listed August 20th, 2025

Days on Market 3

Zoning Zone 91

DATA IS DEEMED RELIABLE BUT IS NOT GUARANTEED ACCURATE BY THE REALTORS® ASSOCIATION OF EDMONTON. COPYRIGHT 2025 BY THE REALTORS® ASSOCIATION OF EDMONTON. ALL RIGHTS RESERVED. Trademarks are owned or controlled by the Canadian Real Estate Association (CREA) and identify real estate professionals who are members of CREA (REALTOR®, REALTORS®) and/or the quality of services they provide (MLS®, Multiple Listing Service®)

Listing information last updated on August 23rd, 2025 at 3:32am MDT