

\$479,900 - 10739 80 Avenue, Edmonton

MLS® #E4456232

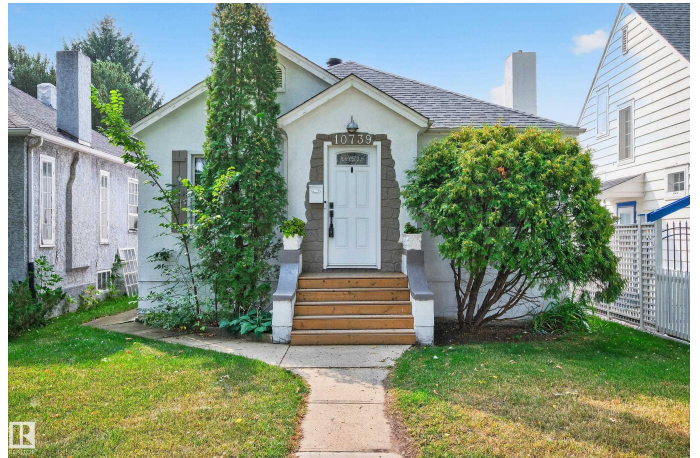
\$479,900

3 Bedroom, 2.00 Bathroom, 1,016 sqft

Single Family on 0.00 Acres

Queen Alexandra, Edmonton, AB

Cute-as-a-buttons & abundantly updated!
Community of Queen Alexandra welcomes you with this charming, very stylish bungalow with partially finished basement (3rd bedroom, bonus room, storage & 3pc bath). You cannot beat this amenity rich location that has something for everyone, shops, trails, transit, golf, schools, all in the heart of River Valley. You will fall in love with the totally renovated kitchen showcasing upscale SS appliance, farmhouse style backsplash, quartz countertops, moveable butcher block island & abundance of new cabinetry. Contemporary twist on cozy living/dining room that is a great space to entertain or unwind. 2 bedrooms on main level with fully renovated 4 pc bath. Additional updates include, new roof, painting & HWT. Fully fenced & landscaped with lovely step-down, back yard deck & BBQ gas line. There is even a quaint side patio off oversized single detached garage to enjoy an evening under the stars. Tremendous opportunity to live in outstanding mature neighbourhood. **MUST SEE!**



Built in 1947

Essential Information

MLS® # E4456232

Price \$479,900

Bedrooms	3
Bathrooms	2.00
Full Baths	2
Square Footage	1,016
Acres	0.00
Year Built	1947
Type	Single Family
Sub-Type	Detached Single Family
Style	Bungalow
Status	Active

Community Information

Address	10739 80 Avenue
Area	Edmonton
Subdivision	Queen Alexandra
City	Edmonton
County	ALBERTA
Province	AB
Postal Code	T6E 1V7

Amenities

Amenities	Deck, Detectors Smoke, Patio, Television Connection, Vinyl Windows
Parking Spaces	2
Parking	Over Sized, Single Garage Detached

Interior

Appliances	Dryer, Garage Control, Garage Opener, Microwave Hood Fan, Refrigerator, Stove-Gas, Washer, Window Coverings, See Remarks
Heating	Forced Air-1, Natural Gas
Fireplace	Yes
Fireplaces	Mantel, See Remarks
Stories	2
Has Basement	Yes
Basement	Full, Partially Finished

Exterior

Exterior	Wood, Stucco
Exterior Features	Back Lane, Fenced, Flat Site, Golf Nearby, Landscaped, Picnic Area, Playground Nearby, Public Swimming Pool, Public Transportation,

Schools, Shopping Nearby

Roof Asphalt Shingles

Construction Wood, Stucco

Foundation Concrete Perimeter

School Information

Elementary GARNEAU SCHOOL K-6

Middle MCKERNAN SCHOOL 7-9

High STRATHCONA SCHOOL 10-12

Additional Information

Date Listed September 5th, 2025

Days on Market 3

Zoning Zone 15

DATA IS DEEMED RELIABLE BUT IS NOT GUARANTEED ACCURATE BY THE REALTORS® ASSOCIATION OF EDMONTON. COPYRIGHT 2025 BY THE REALTORS® ASSOCIATION OF EDMONTON. ALL RIGHTS RESERVED. Trademarks are owned or controlled by the Canadian Real Estate Association (CREA) and identify real estate professionals who are members of CREA (REALTOR®, REALTORS®) and/or the quality of services they provide (MLS®, Multiple Listing Service®)

Listing information last updated on September 8th, 2025 at 11:47am MDT