

\$199,999 - 1702 9916 113 Street, Edmonton

MLS® #E4456310

\$199,999

2 Bedroom, 2.00 Bathroom, 831 sqft

Condo / Townhouse on 0.00 Acres

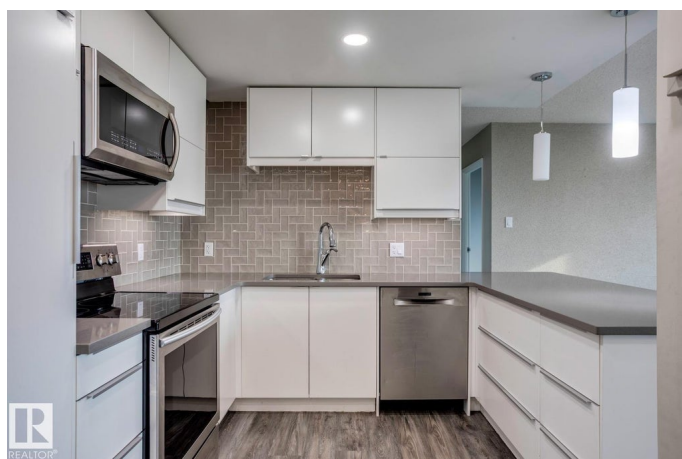
W&hkw&nt&win, Edmonton, AB

Fully renovated, stylish, and ready for you to move in! This 2-bed, 2-bath condo sits high on the second-from-top floor with sweeping river valley views, including the High Level Bridge, Legislature grounds and downtown. Location? Nailed it! You're just steps from the LRT, Victoria Park, the river valley, U of A, MacEwan, shopping, dining, nightlife, and more. The open-concept layout separates the bedrooms for maximum privacy with flexible living space in the main area. The primary bedroom features a 4-piece ensuite, while a second bedroom and full bath round things out. Laundry is conveniently one floor down (no noisy machines or foot traffic on your floor- just quick access when you need it). Heated underground parking keeps your car cozy year-round, and condo fees include all utilities except electricity- even a car wash and shared outdoor space! This is easy, upgraded city living! Move in and enjoy the best of Edmonton right outside your door.

Built in 1981

Essential Information

MLS® #	E4456310
Price	\$199,999
Bedrooms	2
Bathrooms	2.00



Full Baths	2
Square Footage	831
Acres	0.00
Year Built	1981
Type	Condo / Townhouse
Sub-Type	Apartment High Rise
Style	Single Level Apartment
Status	Active

Community Information

Address	1702 9916 113 Street
Area	Edmonton
Subdivision	WÃ©hkwÃ¢ntÃ´win
City	Edmonton
County	ALBERTA
Province	AB
Postal Code	T5K 2N3

Amenities

Amenities	Car Wash, Closet Organizers, Intercom, No Animal Home, No Smoking Home, Parking-Visitor
Parking Spaces	1
Parking	Heated, Underground

Interior

Interior Features	ensuite bathroom
Appliances	Dishwasher-Built-In, Microwave Hood Fan, Refrigerator, Stove-Electric, Window Coverings
Heating	Baseboard, Natural Gas
# of Stories	18
Stories	1
Has Basement	Yes
Basement	None, No Basement

Exterior

Exterior	Concrete, Brick
Exterior Features	Golf Nearby, Public Transportation, River Valley View, Shopping Nearby, View Downtown, See Remarks
Roof	Tar & Gravel

Construction	Concrete, Brick
Foundation	Slab

Additional Information

Date Listed	September 5th, 2025
Days on Market	3
Zoning	Zone 12
Condo Fee	\$839

DATA IS DEEMED RELIABLE BUT IS NOT GUARANTEED ACCURATE BY THE REALTORS® ASSOCIATION OF EDMONTON. COPYRIGHT 2025 BY THE REALTORS® ASSOCIATION OF EDMONTON. ALL RIGHTS RESERVED.Trademarks are owned or controlled by the Canadian Real Estate Association (CREA) and identify real estate professionals who are members of CREA (REALTOR®, REALTORS®) and/or the quality of services they provide (MLS®, Multiple Listing Service®)

Listing information last updated on September 8th, 2025 at 12:47am MDT