

\$1,650,000 - 6306 111 Avenue, Edmonton

MLS® #E4463012

\$1,650,000

6 Bedroom, 5.00 Bathroom, 3,365 sqft
Single Family on 0.00 Acres

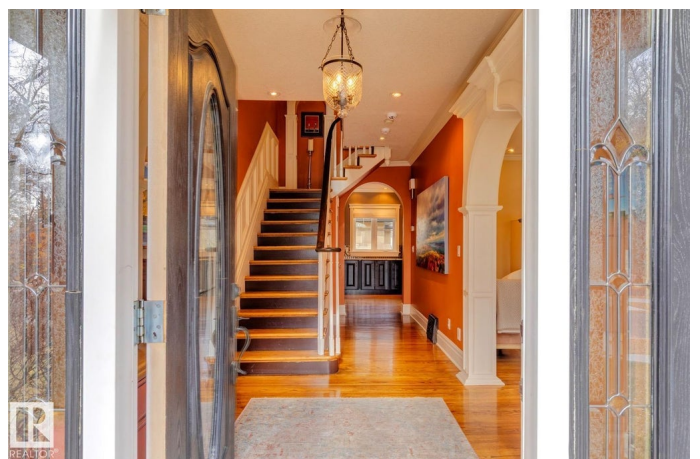
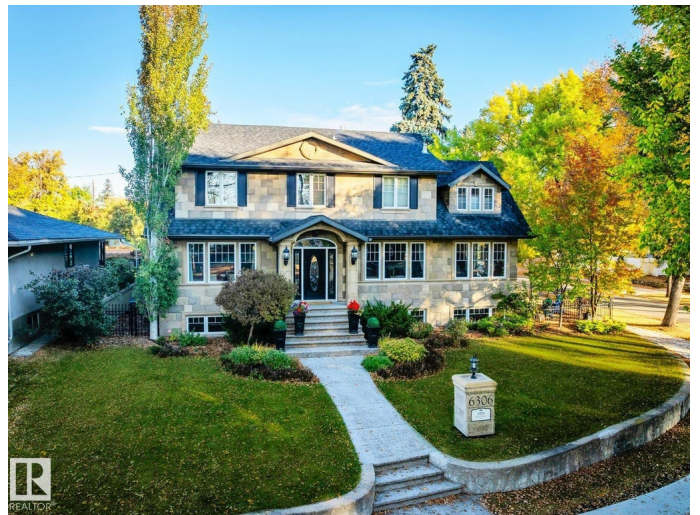
Highlands (Edmonton), Edmonton, AB

Stunning 5000+ sq.ft. 6-bed, 7-bath luxury estate in Edmonton's prestigious Highlands, one of the city's top 10 historical neighborhoods. This historic home has undergone a million-dollar transformation—stripped to the studs and rebuilt with a new 9' R50 ICF foundation. Old-world charm meets modern efficiency with a chef's kitchen, formal living and dining rooms, spa-like master retreat, loft space with full bedroom + full bathroom, and even a dog shower. High-end finishes include granite, slate, travertine, and hardwood, with custom mouldings, solid core doors, and detailed trim throughout. Double insulation, gated driveway, triple garage, and beautifully landscaped yard add to the appeal. A rare opportunity to own a fully restored historic gem in one of Edmonton's most iconic communities.

Built in 1929

Essential Information

MLS® #	E4463012
Price	\$1,650,000
Bedrooms	6
Bathrooms	5.00
Full Baths	3
Half Baths	4
Square Footage	3,365



Acres	0.00
Year Built	1929
Type	Single Family
Sub-Type	Detached Single Family
Style	2 Storey
Status	Active

Community Information

Address	6306 111 Avenue
Area	Edmonton
Subdivision	Highlands (Edmonton)
City	Edmonton
County	ALBERTA
Province	AB
Postal Code	T5W 0L5

Amenities

Amenities	Hot Water Natural Gas, Parking-Extra, Vinyl Windows, Wet Bar
Parking Spaces	6
Parking	Heated, Insulated, Triple Garage Attached

Interior

Interior Features	ensuite bathroom
Appliances	Air Conditioning-Central, Dishwasher-Built-In, Dryer, Garage Control, Garage Opener, Hood Fan, Refrigerator, Stove-Gas, Washer
Heating	Heat Pump, In Floor Heat System, Water
Fireplace	Yes
Fireplaces	Mantel
Stories	3
Has Basement	Yes
Basement	Full, Finished

Exterior

Exterior	Wood, Fiber Cement, Stone
Exterior Features	Back Lane, Corner Lot, Cross Fenced, Fenced, Flat Site, Fruit Trees/Shrubs, Golf Nearby, Landscaped, Level Land, Low Maintenance Landscape, Playground Nearby, Public Swimming Pool, Public Transportation, Schools, Shopping Nearby
Roof	Asphalt Shingles

Construction Wood, Fiber Cement, Stone
Foundation Insulated Concrete Form

Additional Information

Date Listed October 21st, 2025
Days on Market 14
Zoning Zone 09

DATA IS DEEMED RELIABLE BUT IS NOT GUARANTEED ACCURATE BY THE REALTORS® ASSOCIATION OF EDMONTON. COPYRIGHT 2025 BY THE REALTORS® ASSOCIATION OF EDMONTON. ALL RIGHTS RESERVED. Trademarks are owned or controlled by the Canadian Real Estate Association (CREA) and identify real estate professionals who are members of CREA (REALTOR®, REALTORS®) and/or the quality of services they provide (MLS®, Multiple Listing Service®)

Listing information last updated on November 3rd, 2025 at 9:02pm MST