

Courtesy Of Wendy M Lam Of RE/MAX Elite

\$585,000 - 17052 71 Street, Edmonton

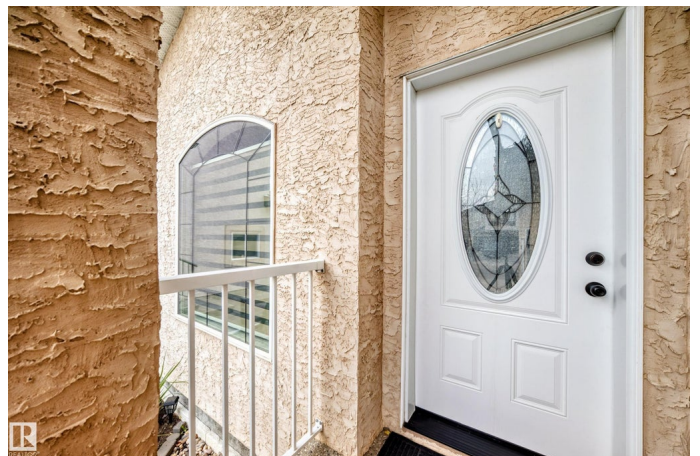
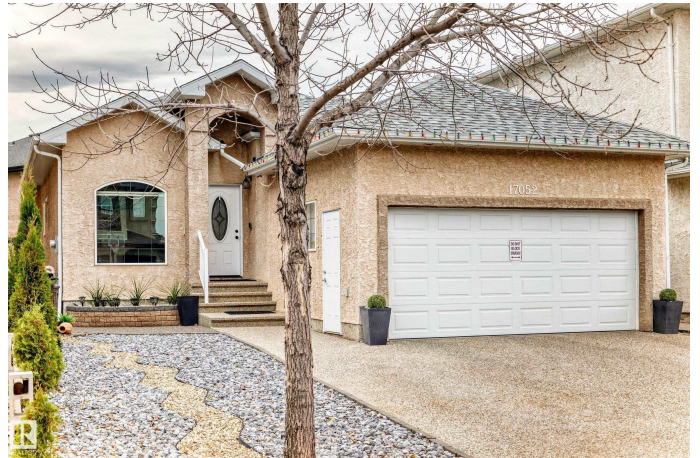
MLS® #E4463727

\$585,000

4 Bedroom, 3.00 Bathroom, 1,386 sqft
Single Family on 0.00 Acres

Schonsee, Edmonton, AB

Absolutely STUNNING! This executive bungalow offers an impressive 2770 sqft of living space, showcasing exceptional craftsmanship & elegance throughout. Open-concept main floor that welcomes you w vaulted ceilings/walnut hardwood floors/elegant architectural pillars & a cozy fireplace w TV niche—perfect for relaxing or entertaining. The gourmet kitchen is a chef’s delight/featuring granite countertops/maple cabinetry/SS appliances/walk-in pantry/5large island w granite countertop. The dining area, enhanced by a striking stone feature wall, patio doors to your private outdoor oasis—completes w landscaped/stacked-stone flower beds/concrete patio. Master bedroom is a luxurious retreat w a walk-in closet/4pc ensuite/granite counter & jetted soaker tub. A den & 2nd bedroom complete the main floor. Fully finished basement offers a huge family room/2 large bedrooms w Jack & Jill bathrm/laundry & utility rm. Exterior incl stucco finish/extended exposed aggregate driveway. Easy access to all amenities. Don't miss!



Built in 2010

Essential Information

MLS® #	E4463727
Price	\$585,000

Bedrooms	4
Bathrooms	3.00
Full Baths	3
Square Footage	1,386
Acres	0.00
Year Built	2010
Type	Single Family
Sub-Type	Detached Single Family
Style	Bungalow
Status	Active

Community Information

Address	17052 71 Street
Area	Edmonton
Subdivision	Schonsee
City	Edmonton
County	ALBERTA
Province	AB
Postal Code	T5Z 0H1

Amenities

Amenities	Deck, Vaulted Ceiling, Vinyl Windows
Parking Spaces	4
Parking	Double Garage Attached

Interior

Interior Features	ensuite bathroom
Appliances	Dishwasher-Built-In, Dryer, Garage Control, Garage Opener, Microwave Hood Fan, Refrigerator, Storage Shed, Stove-Electric, Washer, Curtains and Blinds
Heating	Forced Air-1, Natural Gas
Stories	2
Has Basement	Yes
Basement	Full, Finished

Exterior

Exterior	Wood, Stucco
Exterior Features	Fenced, Landscaped, Playground Nearby, Public Transportation, Schools, Shopping Nearby

Roof	Asphalt Shingles
Construction	Wood, Stucco
Foundation	Concrete Perimeter

Additional Information

Date Listed	October 27th, 2025
-------------	--------------------

Days on Market	8
----------------	---

Zoning	Zone 28
--------	---------

DATA IS DEEMED RELIABLE BUT IS NOT GUARANTEED ACCURATE BY THE REALTORS® ASSOCIATION OF EDMONTON. COPYRIGHT 2025 BY THE REALTORS® ASSOCIATION OF EDMONTON. ALL RIGHTS RESERVED. Trademarks are owned or controlled by the Canadian Real Estate Association (CREA) and identify real estate professionals who are members of CREA (REALTOR®, REALTORS®) and/or the quality of services they provide (MLS®, Multiple Listing Service®)

Listing information last updated on November 3rd, 2025 at 9:02pm MST