

# \$309,900 - 230 400 Palisades Way, Sherwood Park

MLS® #E4466040

## \$309,900

2 Bedroom, 2.00 Bathroom, 1,006 sqft  
Condo / Townhouse on 0.00 Acres

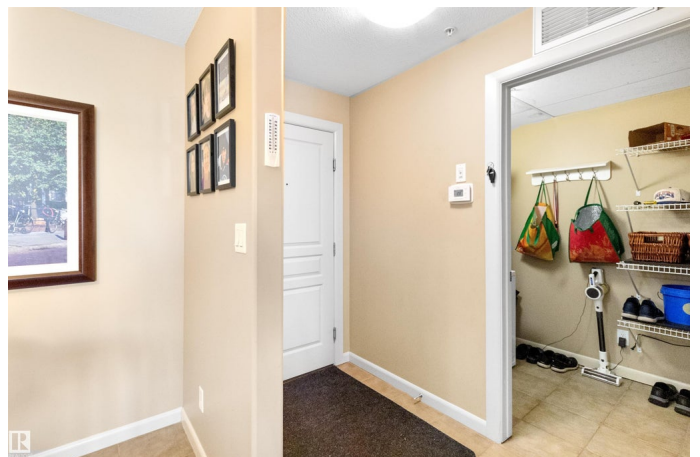
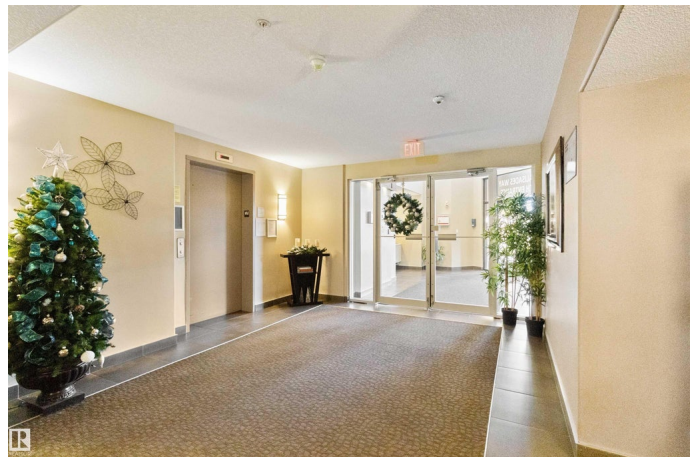
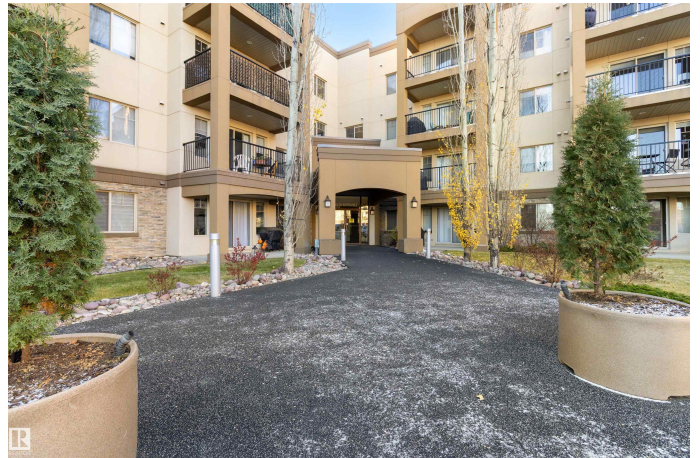
Centennial Village, Sherwood Park, AB

Fantastic 2 bedroom 2 bath single level apartment in desirable Palisades On The Park! Adult living (18+) in peaceful concrete building. New vinyl plank flooring in great room plus and ceramic tile in kitchen and baths. Maple island kitchen with pantry. Insuite laundry. Spacious primary bedroom with walk-in closet with built-in organizer shelving. Full ensuite. Private balcony. Insuite storage. Titled heated underground parking plus assigned private storage in parkade. Great building amenities including: theater room, steam room, sauna, exersize room, social room and car wash. Condo fees include heat and water. Close to Centennial Park, public transportation, shopping, dining and easy city access. Furniture is negotiable!

Built in 2007

### Essential Information

MLS® #	E4466040
Price	\$309,900
Bedrooms	2
Bathrooms	2.00
Full Baths	2
Square Footage	1,006
Acres	0.00
Year Built	2007



Type	Condo / Townhouse
Sub-Type	Lowrise Apartment
Style	Single Level Apartment
Status	Active

### Community Information

Address	230 400 Palisades Way
Area	Sherwood Park
Subdivision	Centennial Village
City	Sherwood Park
County	ALBERTA
Province	AB
Postal Code	T8H 0H4

### Amenities

Amenities	Parking-Visitor, Sauna; Swirlpool; Steam, Social Rooms, See Remarks, Storage Cage
Parking	Heated, Underground

### Interior

Interior Features	ensuite bathroom
Appliances	Dishwasher-Built-In, Dryer, Refrigerator, Stove-Electric, Washer, Window Coverings
Heating	Fan Coil, Natural Gas
# of Stories	4
Stories	1
Has Basement	Yes
Basement	None, No Basement

### Exterior

Exterior	Concrete, Stone, Stucco
Exterior Features	Park/Reserve, Playground Nearby, Shopping Nearby
Roof	Asphalt Shingles, Roll Roofing
Construction	Concrete, Stone, Stucco
Foundation	Concrete Perimeter

### Additional Information

Date Listed	November 17th, 2025
Days on Market	1

Zoning	Zone 25
Condo Fee	\$765

DATA IS DEEMED RELIABLE BUT IS NOT GUARANTEED ACCURATE BY THE REALTORS® ASSOCIATION OF EDMONTON. COPYRIGHT 2025 BY THE REALTORS® ASSOCIATION OF EDMONTON. ALL RIGHTS RESERVED. Trademarks are owned or controlled by the Canadian Real Estate Association (CREA) and identify real estate professionals who are members of CREA (REALTOR®, REALTORS®) and/or the quality of services they provide (MLS®, Multiple Listing Service®)

Listing information last updated on November 18th, 2025 at 1:02am MST